

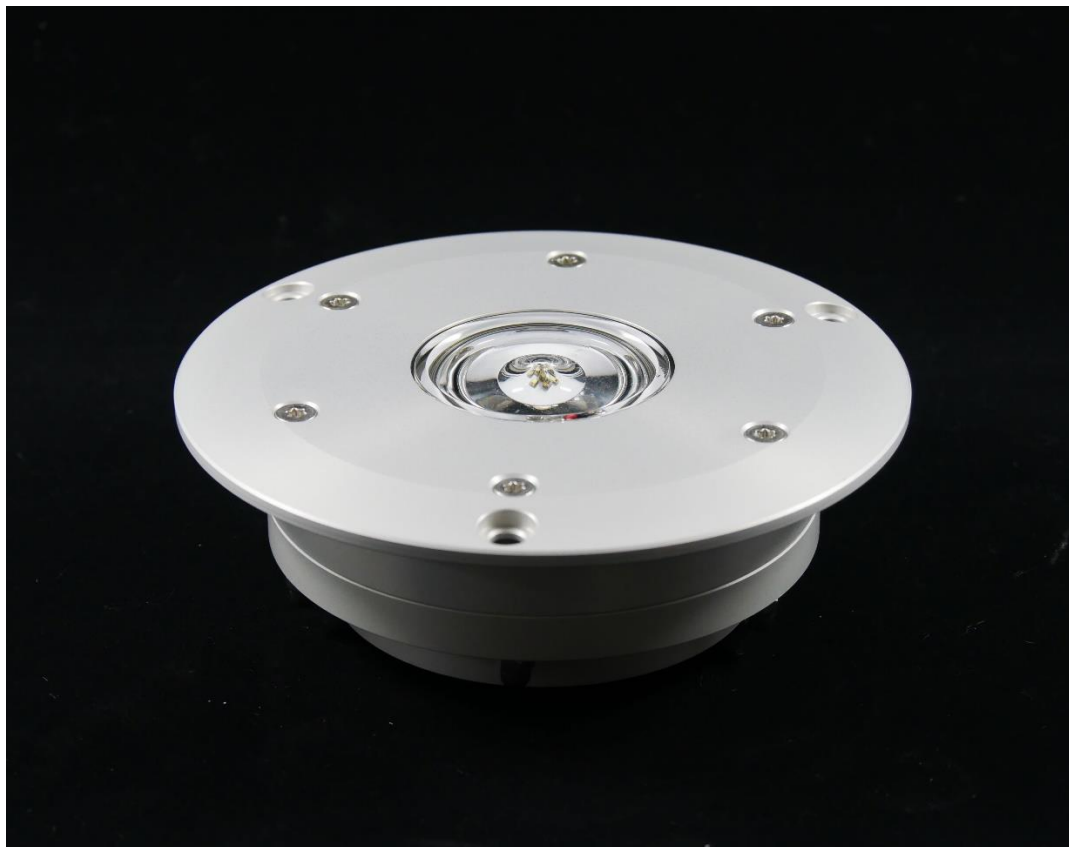
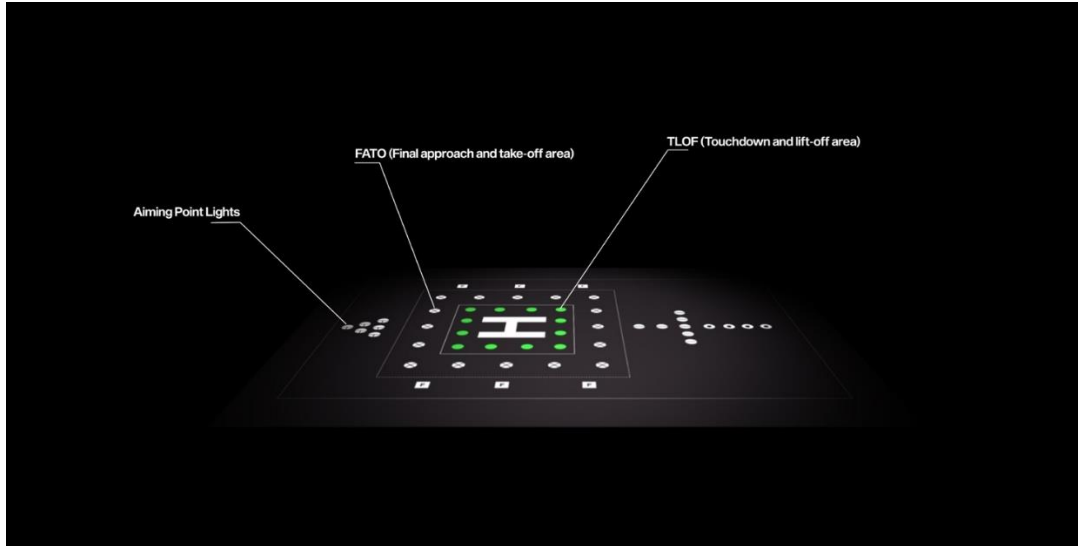
Helix Series

Inset LED light for Helipad

Aiming Point Lights

FATO Lights

TLOF Lights



1. SUMMARY

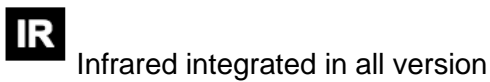
Product summary :

Design:	Inset LED Light for Helipad	Power supply	48 VDC / (6.6A or 230V with external driver)
Material:	Aluminum or Stainless Steel	Power:	Max. 15W
IP Rating:	IP 67	Standards:	ICAO, CAP437 (power limitation in factory)
NVG Enhanced:	Integrated InfraRed	Brightness ctrl.:	Yes, with LBR II DA or DALI
Projection:	< 4mm	LED Lifetime:	> 80'000 hours
		iControl Ready:	Yes
		DALI	Yes

Options :

- Aluminium
- Stainless Steel A4 (316L)

Available colors :



2. TECHNICAL DESCRIPTION:

A. Mechanical characteristics:

Body material:	Aluminum anodized or Stainless steel Borosilicate glass
Diameter:	150mm
Height above ground:	Lower than <4 mm
Weight:	1 kg
Temperature range:	-35° to +50°C
Protection Class:	IP67
Water / Humidity:	WatBar – Physical insulation between the “connection room” and the light
Insulation	light
Note:	No glued parts, no PMMA, no acrylic glass parts

B. Optical characteristics: (visible)

Technology:	High Power LED
Light source:	Aerolighting HELI-8 LED engine
Available color:	Green/White/Yellow/Blue/Red/Infrared/Dual
Intensity (White):	100cd @ 0° (ground level)
Horizontal output:	360°
Intensity level:	100% - 30% - 10% with LBR II DA // or from 5% to 100% with DALI
LEDs Lifespan:	>80'000 hours

B'. Optical characteristics: (InfraRed)

Technology:	High Power LED
Light source:	Aerolighting HELI-8 LED engine
Wavelength:	850nm (central) +/- 30nm
Intensity (White):	Up to 180mw/sr @ 0° elevation
Horizontal output:	360°
Intensity level:	100% - 30% - 10% with LBR II DA // or from 5% to 100% with DALI
LEDs Lifespan:	>80'000 hours

C. Electrical characteristics:

Supply Voltage:	48 Volts DC
Power:	Max 15 Watts
Brightness regulation (visible):	LBR II DA DALI (fully compatible with Digital Adressable Lighting Interface)
Connection:	+Vdc / -Vdc / DA / DA
Type of cable:	4x 1.5mm ² (if DALI or LBR II DA is not used, only 2 wire are connected)
<i>Note: this light can be used only by connecting 48V without any regulation (only ON/OFF)</i>	

D. Aeronautical standards

ICAO:	Annex 14 Vol II: TLOF – FATO – Aiming point – Flight path alignment and guidance
CAA:	CAP437: Perimeter light inset. NOTE: Power limitation must be applied using a LBR II DA for CAP437 conformity.
DGAC-STAC	Homologation pending
DIN EN IEC 62471:2009	Safety of lamp system (for InfraRed part)
ICAO-DGAC	Mechanical resistance: Up to 10'000 kgs on the glass

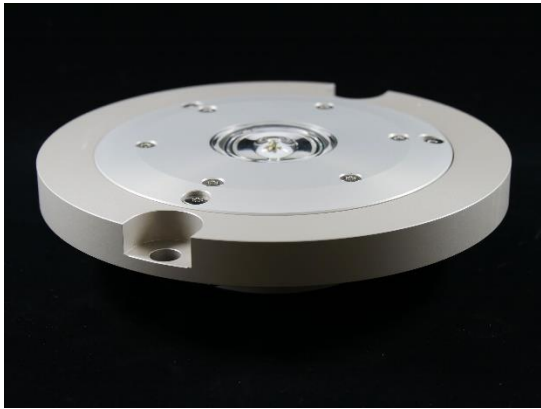
3. ORDERING CODE:

HELix- G - AL

Type	Color	Material
HELix	-G: <i>Green</i> -W: <i>White</i> -Y: <i>Yellow</i> -B: <i>Blue</i> -R: <i>Red</i> (all color include infrared)	-AL: Aluminum -IN: Stainless Steel

Example: **HELix-G-AL** -> HELI, Green, Aluminium

Related products:



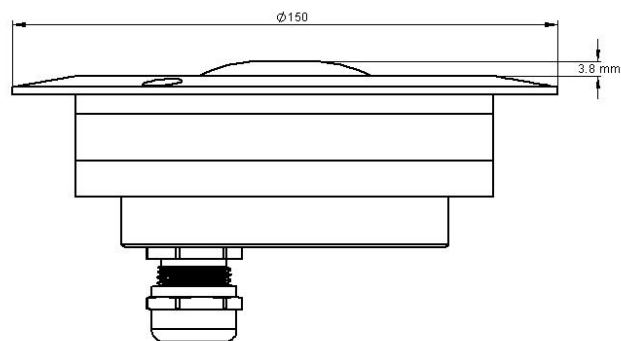
8" adapter ring (install HELI light into standard 8 inches base)



150mm shallow base (HXX Base)

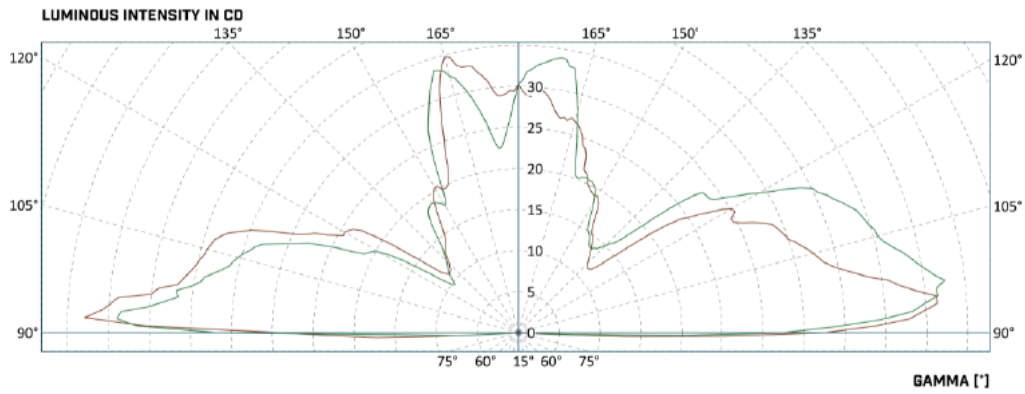
- External IP67 110-230 Volts driver
- External IP67 6.6A Driver
- LBR II DA brilliancy control central power supply

4. DRAWING:

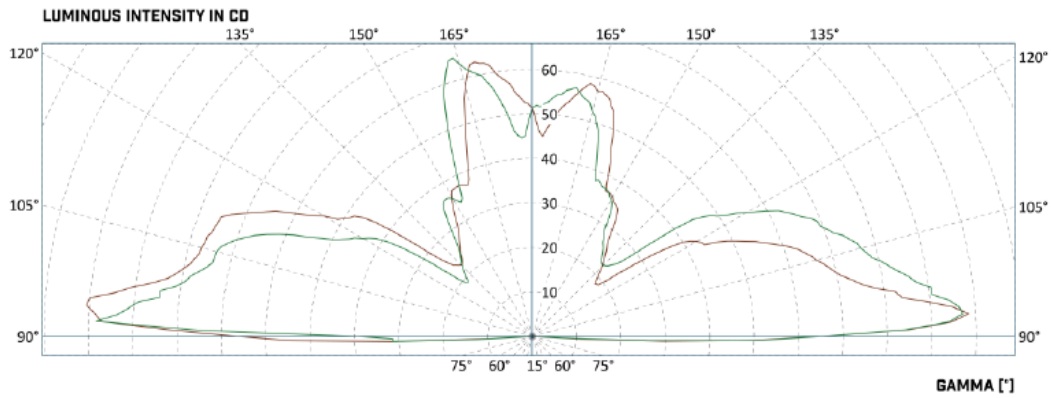


5. PHOTOMETRIC DATA:

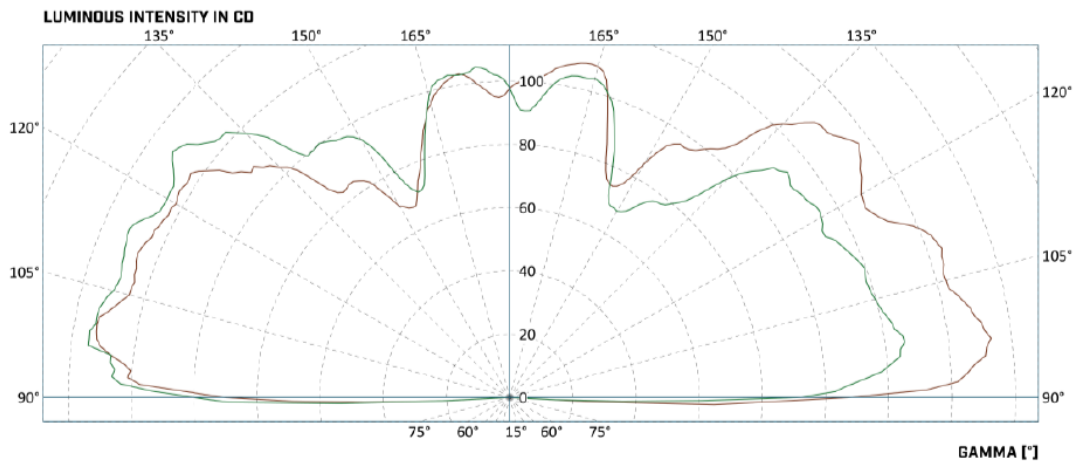
CAP437 (with intensity limitation programed in factory) - Green



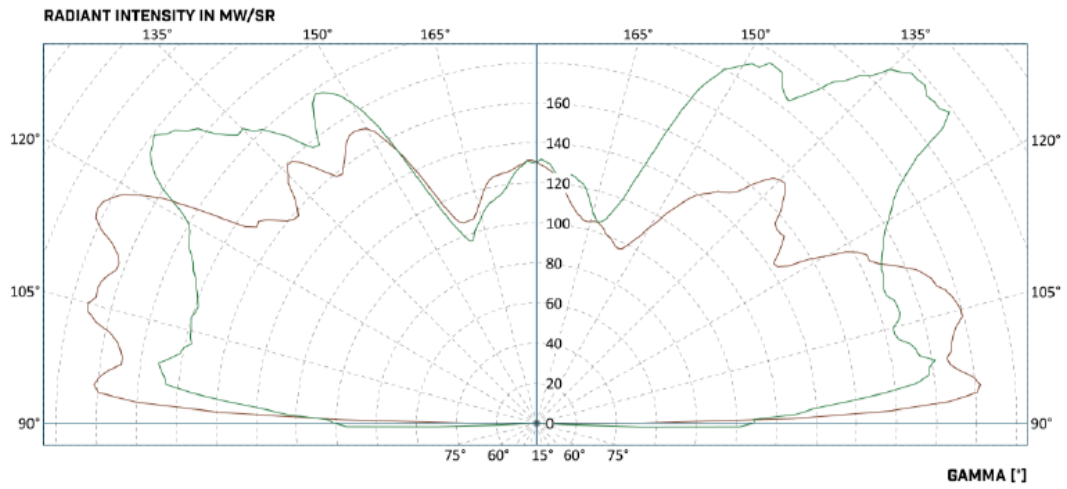
ICAO - Green



ICAO - White



INFRARED (integrated with all colors)



The descriptions, photometric measurements and features contained in this publication are given for information only and do not constitute an engagement for our society, which reserves the right to change them without prior notification.