

336 WEST 13TH STREET

BETWEEN HUDSON STREET & 8TH AVENUE | MEATPACKING DISTRICT



**FULLY BUILT OUT
FITNESS SPACE**



336 WEST 13TH STREET

BETWEEN HUDSON STREET & 8TH AVENUE | MEATPACKING DISTRICT

SIZE

Ground Floor

1,650 SF

FRONTAGE

35'

CEILING HEIGHT

15'

POSSESSION

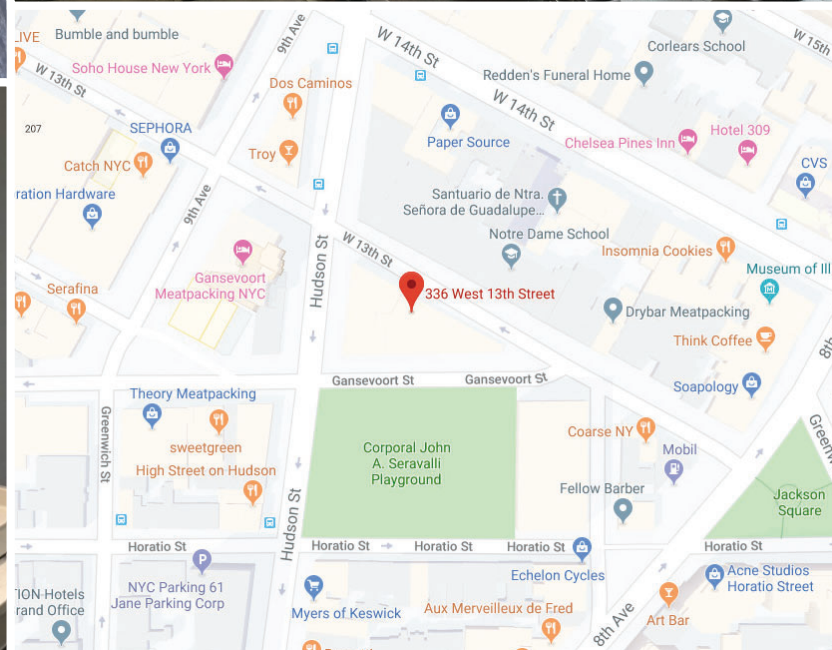
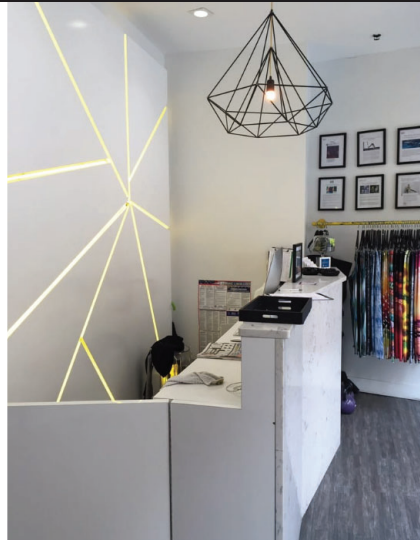
Immediate

TRANSPORTATION

1 2 3 L

COMMENTS

- Fully Built Out Fitness Space
- Brand New Store Front
- Brand New HVAC
- Entrances On Hudson and Gansevoort
- Move In Ready
- In The Same Building As Marni and Zimmerman



CONTACT OUR BROKER(S) FOR MORE INFORMATION

ALBERT MANOPLA

AManopla@ksrny.com

212.380.8369

JACK KHASKI

JackK@ksrny.com

917.355.0559

ORI MELLOUL

OMelloul@ksrny.com

347.377.1392

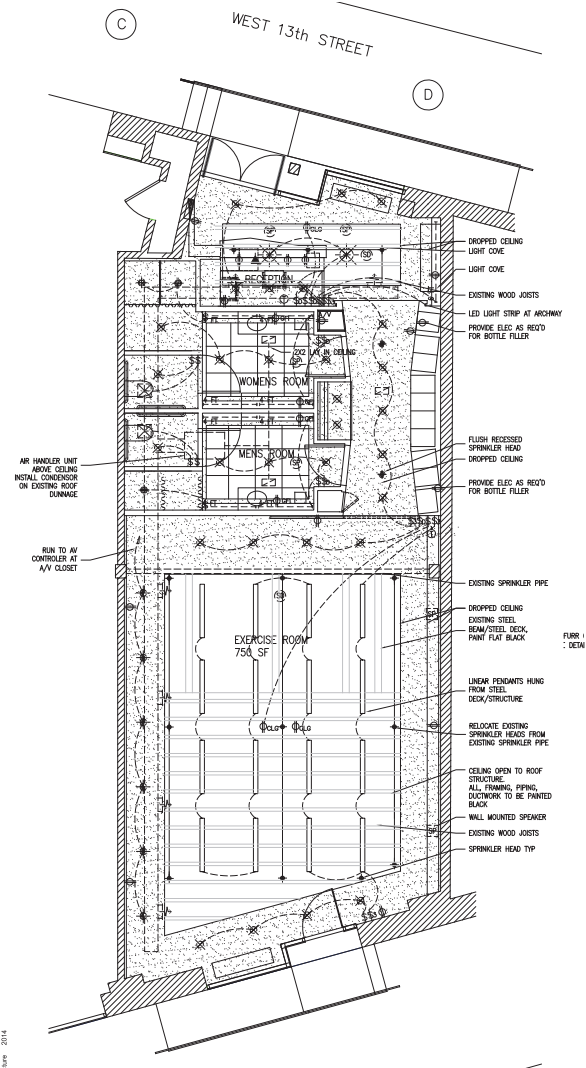
KASSIN SABBAGH REALTY | 1385 Broadway 22nd floor | New York, NY 10018 | (212) 417 - 9217 | www.ksrny.com

All information supplied in this marketing presentation and/or flyer is from sources deemed reliable and is furnished subject to errors, omissions, modifications, removal of listings from sale/lease and to any listing conditions. Any square footage, dimensions, floor plans and/or technical data set forth are approximations and are subject to further elaboration/confirmation.

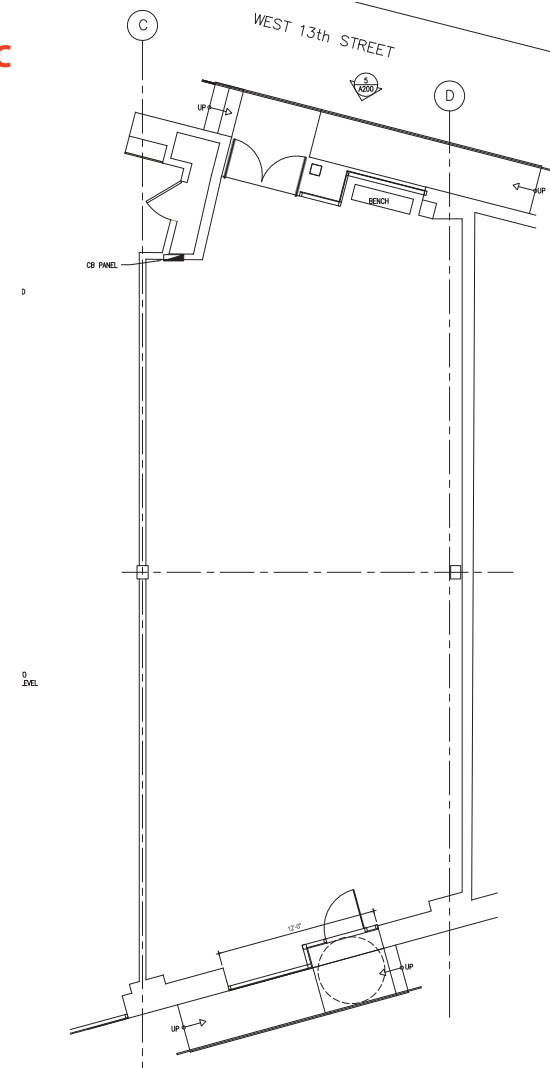
336 WEST 13TH STREET

BETWEEN HUDSON STREET & 8TH AVENUE | MEATPACKING DISTRICT

AS BUILT



BASIC



KASSIN SABBAGH REALTY | 1385 Broadway 22nd floor | New York, NY 10018 | (212) 417 - 9217 | www.ksrny.com

All information supplied in this marketing presentation and/or flyer is from sources deemed reliable and is furnished subject to errors, omissions, modifications, removal of listings from sale/lease and to any listing conditions. Any square footage, dimensions, floor plans and/or technical data set forth are approximations and are subject to further elaboration/confirmation.

CONTACT OUR BROKER(S) FOR MORE INFORMATION

ALBERT MANOPLA

AManopla@ksrny.com

212.380.8369

JACK KHASKI

JackK@ksrny.com

917.355.0559

ORI MELLOUL

OMelloul@ksrny.com

347.377.1392