

111 4TH AVENUE

BETWEEN EAST 11TH & EAST 12TH STREETS | UNION SQUARE

ksr
KASSIN SABBAGH REALTY



111 4TH AVENUE

BETWEEN EAST 11TH & EAST 12TH STREETS | UNION SQUARE

SIZE

Ground Floor **4,122 SF**

CEILING HEIGHT

20'

FRONTAGE

40'

TRANSPORTATION



ASKING RENT

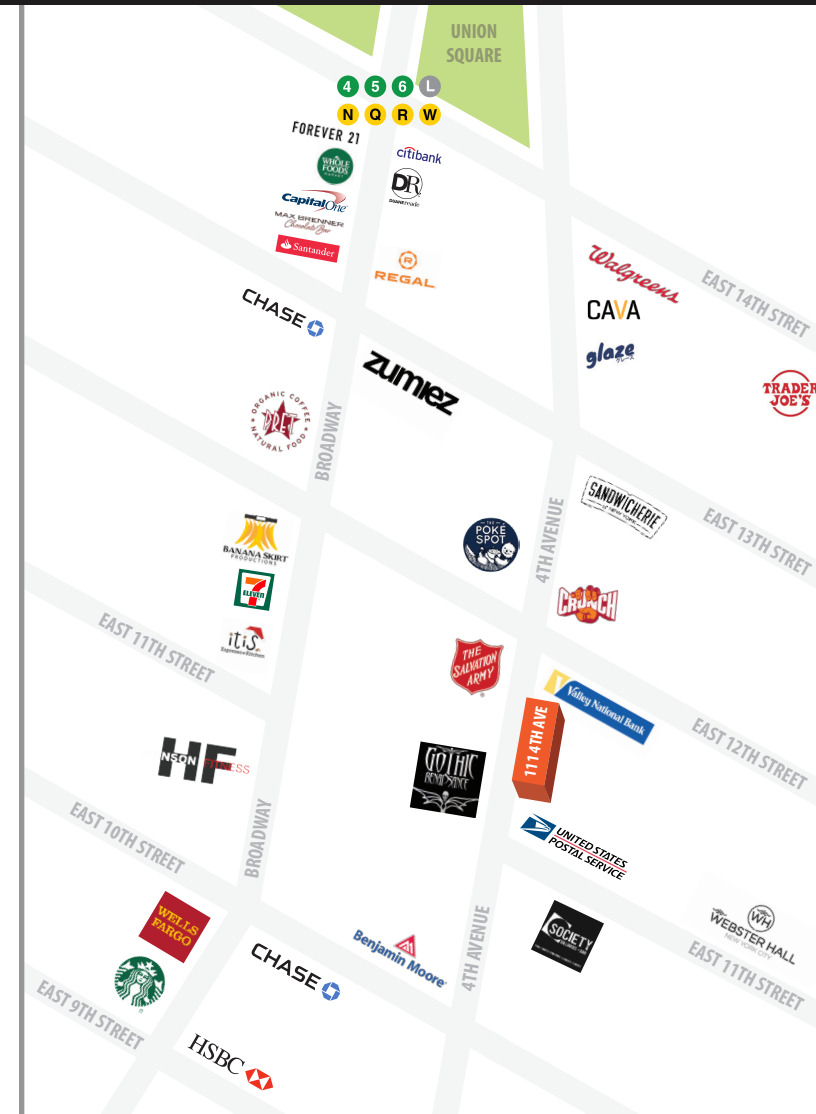
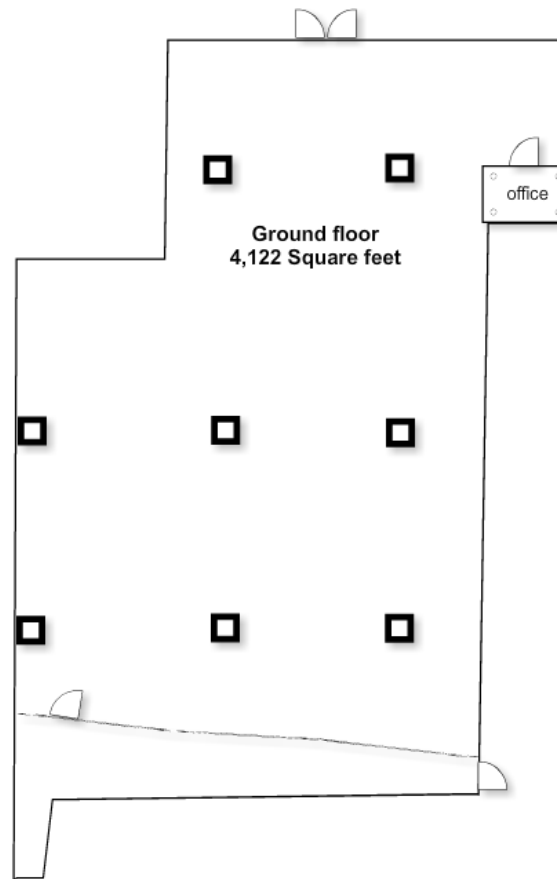
Upon Request

POSSESSION

Arranged

COMMENTS

- Space can be divided
- Food uses accepted



KASSIN SABBAGH REALTY
1385 Broadway 22nd floor
New York, NY 10018
(212) 417 - 9217
www.ksrny.com

ALBERT MANOPLA
AManopla@ksrny.com
212.380.8369

YONI HADAR
YHadar@ksrny.com
347.517.8705

ALBERT HALAWANI
AHalawani@ksrny.com
347.204.6578

CONTACT OUR BROKER(S) FOR MORE INFORMATION