

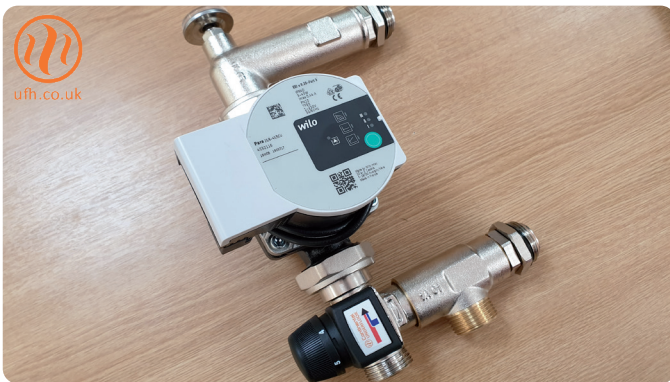
Product datasheet

HeatMax™ large area mixer

HeatMax™ large area mixer: high temp

The HeatMax™ large area mixer provides accurate “on manifold” water temperature control to heating circuits, and connects via ball valves to the manifold.

This is for systems where a high temperature heat source is used, and controls water temperature via the mixing valve to the design temperature required.



HeatMax™ large area mixer: low temp

The HeatMax™ large area mixer is also available without the mixing valve, for use in situations where water temperature controls are not required. This is usually the case where heat pumps are used.



About us

No ifs, no buts. The award-winning Continental Underfloor® service means you get an underfloor heating system delivered to you on time, on site, every time, no compromise.

Features:

- Pre-assembled high efficiency pump unit
- Accurate TMV adjustable from 20°C to 55°C
- Compact design
- Nickel plated
- Connects to HeatMax™ manifolds via valve connections
- Built-in temperature gauge
- Built-in non-return valve in flow elbow to allow simple system filling when commissioning
- Unique swivel joint to allow left or right hand fitting

Technical:

- Dimensions: 311mm x 191mm x 133mm
- Inlet connections: 1 x G1" / 22mm or 28mm
- Outlet connections: 1 x G1" / 22mm or 28mm
- Manifold connections: 2 x G1"
- Valve body: kvs 3.4

Temperature:

- Operating temperature range: 20°C to 55°C
- Maximum temperature: 95°C

Pressure:

- Maximum static pressure: 10 bar
- Maximum differential pressure: 3 bar

