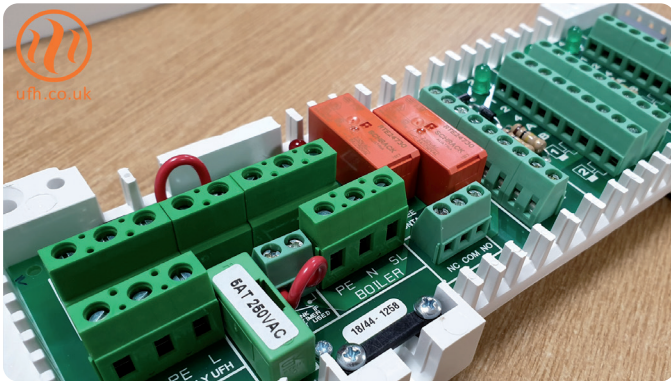


Product datasheet

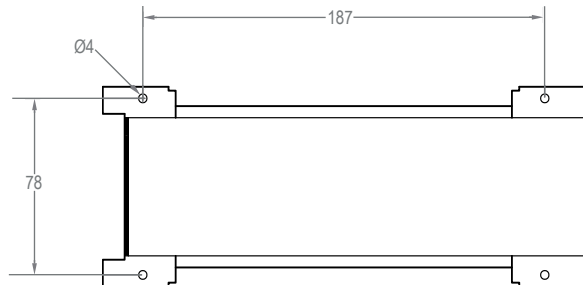
HeatMax™ wiring centre

The HeatMax™ wiring centre provides connections to room thermostats, actuators and provides switching to motorised valves, the UFH pump and heat sources.



Features:

- Connects HeatMax™ room thermostats to the corresponding HeatMax™ zone actuators
- Zone actuator state (open / close) indicated by green LEDs
- Boiler and pump state (on / off) by red LEDs
- Includes a volt free contact to drive external items such as combination boilers
- Additional zones can be added by plugging in HeatMax™ wiring centre extensions
- DIN rail or wall mounted



Technical:

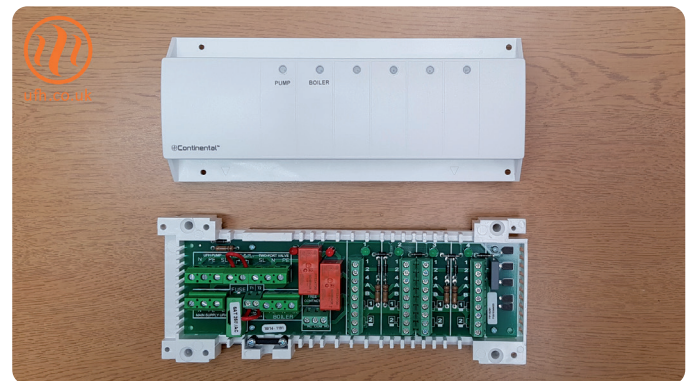
- Dimensions: 225mm x 90mm x 58mm
- IP rating: IP20
- Actuator contact: triac
- Maximum actuators per zone 15w: 4
- Maximum actuators between all wiring centres: 24
- Operating temperature: 0°C to 50°C

Electrical data:

- Power supply: 230VAC 50/60Hz
- Fuse: 5A internal
- Pump contact: relay max 8A
- Volt free contact: relay max 16A

Accreditations:

- EN 61000-4-2 - 2001
- EN 61000-6-1 - 2002
- EN 60730 - 2003
- EN 61000-6-3 - 2004
- Low voltage 2006/95/CE
- EMC 2004/108/CE



About us

No ifs, no buts. The award-winning Continental Underfloor® service means you get an underfloor heating system delivered to you on time, on site, every time, no compromise.

