

## Recess curtain tracks for clean lines



Reese™ is a recessed curtain track solution that is built into the ceiling during construction. Curtain tracks systems from Lutron® can be fitted inside the Reese track when construction work is completed. When installed, curtains hang below the track close to the finished ceiling.

Tracks and end sets are available with chamfered edges and with skim coat flanges, depending on ceiling type. Tracks and end sets can be emulsion painted to perfectly match the ceiling.

### Features

- ✓ Minimalistic design hiding curtain tracks
- ✓ End sets tailored to drive-end and belt return-end
- ✓ Option to install with or without skim coat flanges
- ✓ Supplied in 6m lengths or cut to specific size
- ✓ White as standard



Reseller logotype and information

# TECHNICAL INFORMATION

## DESCRIPTION

Recessed profiles to house curtain tracks, drives and belt returns.

## MATERIAL

- Tracks in anodized aluminium, EN 6060 T66
- End sets in POM polymer

## SIZES

- Track size 30x39.5 mm
- Pre-cut to length or lengths for cutting at site
- End set size maximum width 74 mm

## FINISHES

- White to be plastered in and decorated at site to match ceiling.

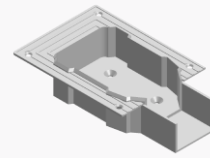
## SKIM COAT FLANGES

- Flanges on both sides
- No flanges

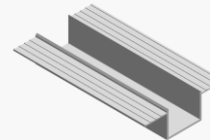
## INSTALLATION

- Screws through skim coat flanges or countersink screws through track
- The finished plaster level should be flush with chamfered edge.

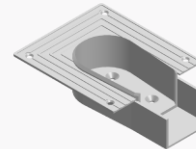
### Reese with skim coat flange



Drive-end  
LMBF

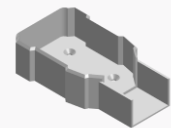


Track  
RT1F

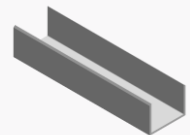


Return-end  
LRBF

### Reese without flange



Drive-end  
LMB



Track  
RT1



Return-end  
LRB

**Reese™** is a trademark of Blindspace AB.

**Lutron®** is a trademark of Lutron Electronics Co., Inc.,

Reseller logotype and information