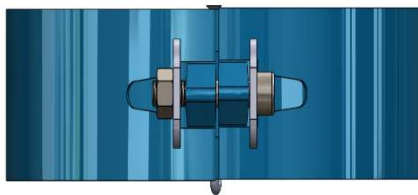
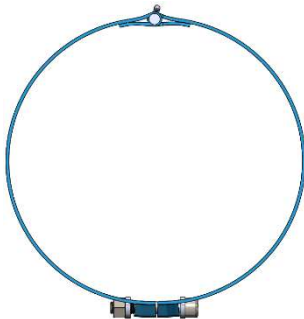




Stop Collar – Hinged Friction Grip Type

- **Noted Design Appearance Characteristics**
 - Hinged style
 - Attaches to casing by tightening a draw bolt with Allen head bolt
- **Performance**
 - Easy installation
 - Provides suitable holding force for most applications
 - Tested in accordance to API 10D-2 recommendations
- **Application**
 - Used in all types of well designs
 - Must have adequate annular clearance due to positive OD
 - May be used in CH and OH applications
 - Can be used with most hinged bow centralizers
 - Not recommended for baskets
 - Not recommended for close tolerance applications
 - Recommended minimum clearance between casing and annular clearance is 1 ½”





Stop Collar – Slip-On Set Screw Type

- **Noted Design Appearance Characteristics**
 - Slip-on style
 - Attaches to casing by tightening set screws around collar circumference
 - Beveled leading edge
- **Performance**
 - Easy installation with Allen wrench
 - Provides suitable holding force for most applications
 - Tested in accordance to API 10D-2 recommendations
- **Application**
 - Primarily used in close tolerance applications
 - Used in all types of well designs
 - May be used in CH and OH applications
 - Can be used with most bow centralizers
 - Can be used with most slip-on positive bar centralizers
 - Is recommended for all cement baskets
 - Recommended minimum clearance between casing and annular clearance is 1 1/8”
 - Custom applications may be available to fit tighter clearance restrictions

