



wisewage



WiseWage makes it easy for employers to pay their workers via direct deposit. We offer a selection of safe and affordable FDIC-insured accounts. Your workers choose the card that fits their needs.

We also offer a convenient payroll card, suitable for larger businesses with more than five unbanked workers.

With WiseWage, a worker can apply online at a desktop or with their smartphone. They will receive a card in the mail shortly. Once they activate the account, you can pay them quickly and without the cost of writing checks. That's it!

CONTACT US

Adam Rust

adam@wisewage.org

919.260.3653

110 E. Geer St.

Durham, North Carolina 27701

@WiseWage

INSTRUCTIONS FOR EMPLOYERS

Tell Your Workers about [Wisewage.org](https://www.wisewage.org)

Tell your employees about [Wisewage.org](https://www.wisewage.org).
Distribute materials available on the site.

Let The Employee Choose

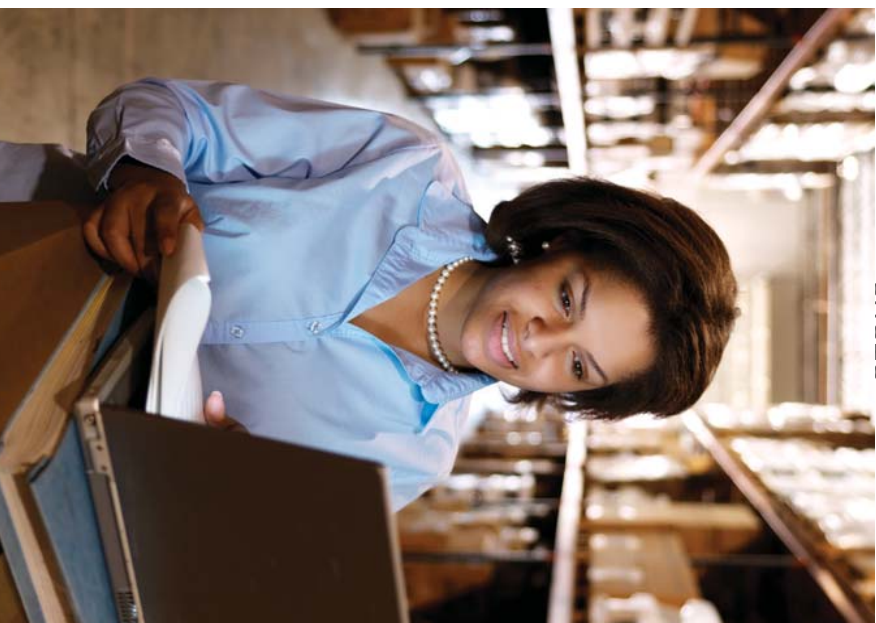
Your employee can pick from a selection
of FDIC-insured accounts that will receive
direct deposit of wages.

Get the Routing and Account Numbers

Ask your employee for the bank's routing
number and the worker's account number.

Receive Authorization

Using the downloadable form on [Wisew-
age.org](https://www.wisewage.org), gain permission from your
employee to pay via direct deposit.



INSTRUCTIONS FOR WORKERS

Apply for an account from [Wisewage.org](https://www.wisewage.org)

Select the card that fits your needs.

Activate the Card

When the card comes, you must activate
by contacting the card company by phone
or through the card's app.

Give your Routing and Account Numbers to your Employer

The numbers will come with your card.
Also, they may be found online or in the
app.

Sign Up for Direct Deposit

Using the downloadable form on [Wisew-
age.org](https://www.wisew-
age.org), gain permission from your
employee to pay via direct deposit.