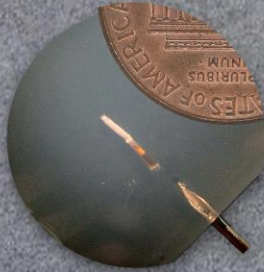




LODESTONE BIOMEDICAL



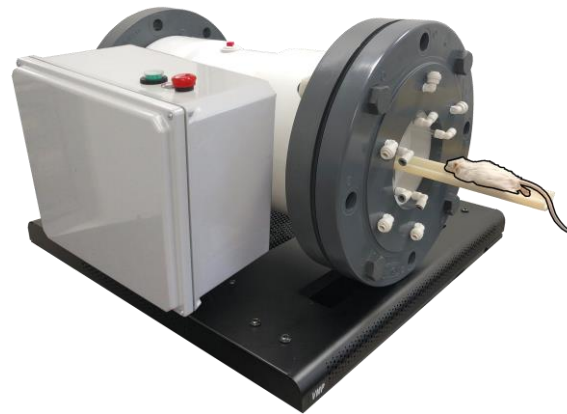
IRIS

Immunotherapy Response Indication system

Lodestone's nanoparticle implant opens the door for a broad spectrum of longitudinal *in vivo* assays in the tumor microenvironment. Answer your most critical questions before they become a problem!

Does your drug ...

- ... engage the intended target?
- ... have the intended impact on the tissue?
- ... create a clinically meaningful change?
- ... only affect a subset of the patients?
- ... cause adverse effects or local toxicity?



Advanced Sensor

Needle-Implantable

Biodegradable

Independent of Tissue Depth

Picogram Detection Range

Adjustable Lifetime

Advanced Measurements

Low Magnetic Field

Real-Time Monitoring

30 seconds per mouse

Multi-Probes

Multi-Analyte

Lodestone Biomedical LLC
10 Water Street, Suite 265
Lebanon, NH 03766, USA