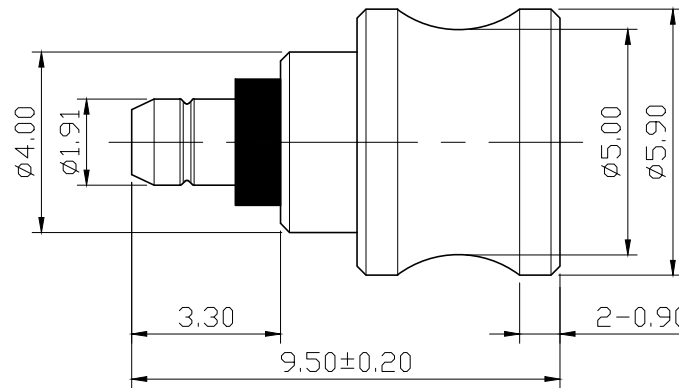



REMARK : RoHS REQUIREMENT APPLIED
(符合RoHS)



S 1 : 1

NOTE:

- 1.The number 1~3(body assembly) and 4 parts are provided by Estron.
- 2.Nickel(80u") base with gold(8~20u") plated.

7	shell	1	brass	gold		DIMENSIONS ARE IN MILLIMETERS UNLESS OTHERWISE PECIFIED TOLERANCES (一般公差) 0.5~6 = ±0.2 >6~30 = ±0.4 >30~120 = ±0.6 >120~315 = ±1 >315~1000 = ±1.6 ANGLES(角度) = ±5°	CHECKED	 雅鈦企業有限公司 Aec Connectors Co., Ltd.					
6	insulator	1	POM	black									
5	contact pin	1	beryllium copper	gold(5u")									
4	O ring	1	silcone	black/red									
3	body	1	brass	gold(8~20u")									
2	insulator	1	LCP	black									
1	contact pin	1	beryllium copper	gold(8~20u")									
NO.	Description	Unit	Materials	Finish	Drawing No.	SCALE	6 : 1	UNIT	MM	DATE	2020. 07. 03	TITLE	T2 PLUG TO MMCX JACK ADAPTOR
												DRAWING NO.	RA-504GG(BeCu)-POM-BK/RD
												FILE NO.	DRAWING\AUDIO\RA\RA-504GG(BeCu)-POM-BK/RD