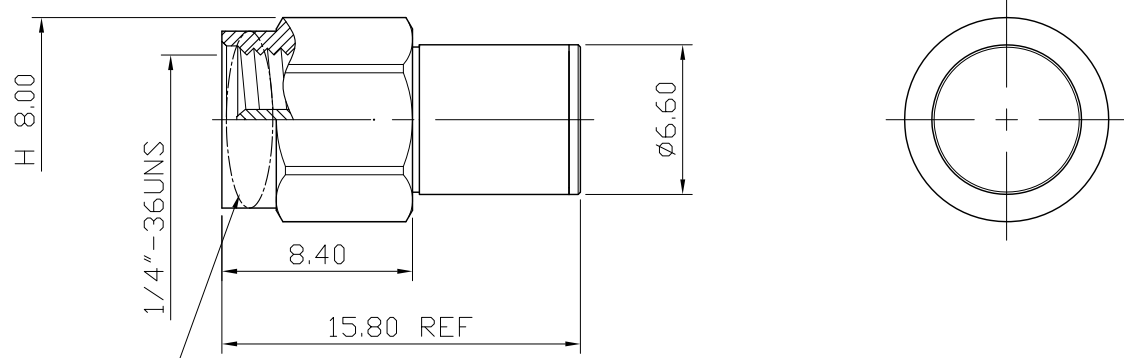


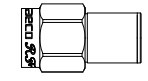
| | | | | | | |
|-----|--------------|-----------------|-----|---|------|-------------|
| No. | DATE | DESCRIPTION | REV | REMARK : RoHS REQUIREMENT APPLIED (符合RoHS) | DATE | DRAWING NO. |
| △ | 2020. 05. 27 | Add LOGO (新增商標) | | | | |



AECO RF

LOGO : LASER

THE ACTUAL DIRECTION AND POSITION OF THE LOGO MIGHT BE SLIGHTLY DIFFERENT.



S 1 : 1

- Electrical Characteristic:
1. Impedance: 50 ohm
 2. Frequency Range: DC~20 GHz
 3. VSWR: 1.05:1 max.@DC~4GHz
1.10:1 max.@4~12GHz
1.20:1 max.@12~20GHz
 4. Power Rating: 1 Watt average@20°C

| - | cover | 1 | brass | gold | |
|-----|-------------|------|-----------------|-----------|-------------|
| - | solder tab | 1 | brass | none | |
| - | body | 1 | brass | gold | |
| - | resistor | 1 | none | none | |
| - | contact pin | 1 | brass | gold(3u") | |
| - | insulator | 1 | PTFE | white | |
| - | C ring | 1 | steel | none | |
| - | gasket | 1 | silicone | red | |
| - | shell | 1 | stainless steel | passivate | |
| NO. | Description | Unit | Materials | Finish | Drawing No. |

DIMENSIONS ARE IN MILLIMETERS
UNLESS OTHERWISE SPECIFIED
TOLERANCES
(一般公差)
0.5~6 = ±0.2
>6~30 = ±0.4
>30~120 = ±0.6
>120~315 = ±1
>315~1000 = ±1.6
ANGLES(角度) = ±5°

SCALE 3 : 1 UNIT MM

CHECKED

DRAWN
Jordan
DATE
2016. 09. 06



雅鈦企業有限公司
Aec Connectors Co., Ltd.

TITLE
SMA TERMINATOR

DRAWING NO.
SA-2006GTG-SH0015A

FILE NO. DRAWING\RF\SA\SA-2006GTG-SH0015A