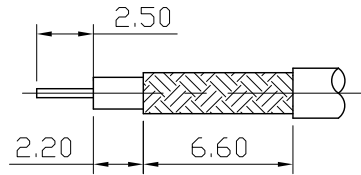
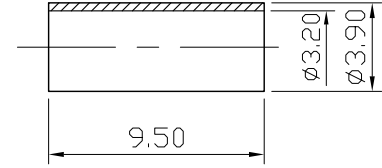
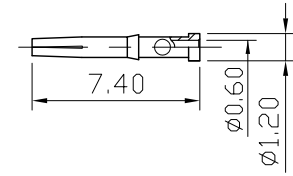
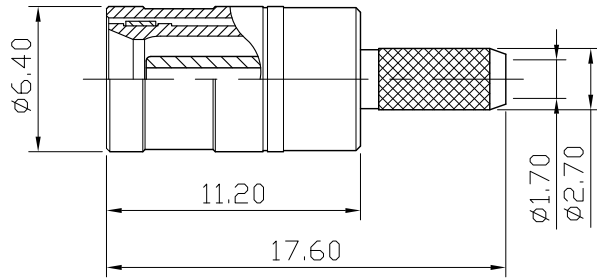
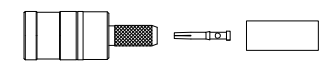



No.	DATE	DESCRIPTION	REV	REMARK : RoHS REQUIREMENT APPLIED (符合RoHS)	DATE	DRAWING NO.
					2008. 07. 16	SB-101SGG(PB)-TEF(05)-316U



RECOMMENDED CABLE STRIPPING DIM'S
(建議剝線尺寸)



S 1 : 1

-						DIMENSIONS ARE IN MILLIMETERS UNLESS OTHERWISE SPECIFIED TOLERANCES (一般公差) 0.5~6 = ±0.2 >6~30 = ±0.4 >30~120 = ±0.6 >120~315 = ±1 >315~1000 = ±1.6 ANGLES(角度) = ±5°	CHECKED	 雅鈦企業有限公司 Aec Connectors Co., Ltd.	
-	ferrule	1	brass	gold			DRAWN <i>Jim</i>		TITLE SMB MALE CRIMP FOR RG-174/U,188/U,316/U
-	contact pin	1	phosphor bronze	gold					DATE 2007. 09. 03
-	Cring	1	brass	gold				FILE NO. DRAWINGRFRFSB/SB-1001GTG-SC1715	
-	insulator	1	PTFE	white					
-	body	1	brass	gold					
-	body	1	brass	gold					
NO.	Description	Unit	Materials	Finish	Drawing No.	SCALE 3 : 1 UNIT MM			