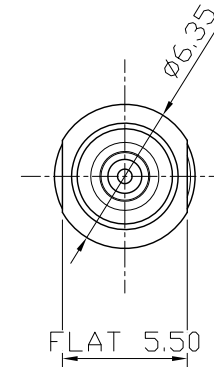
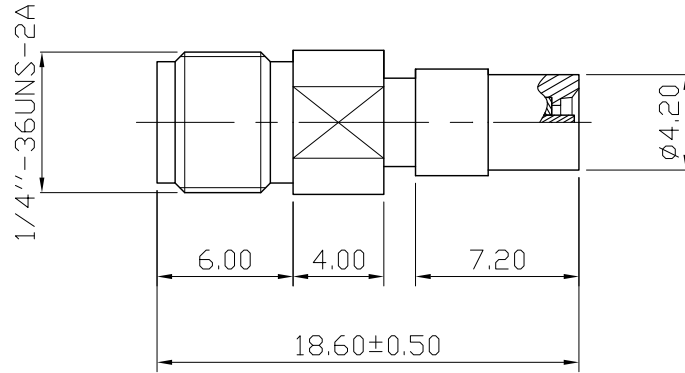
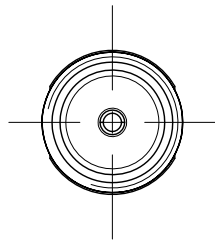
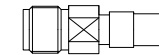


DESCRIPTION	REV	REMARK : RoHS REQUIREMENT APPLIED (符合RoHS)	DATE	DRAWING NO.
	A			




Electrical Characteristic:

1. Impedance: 50 ohm
2. Frequency Range: DC~6 GHz
3. VSWR: 1.15:1 max. @DC~3GHz  
1.30:1 max. @3~6GHz



S 1 : 1

-	contact pin b	1	brass	gold(3u")		DIMENSIONS ARE IN MILLIMETERS  UNLESS OTHERWISE PECIFIED TOLERANCES (一般公差) 0.5~6 = ±0.2 >6~30 = ±0.4 >30~120 = ±0.6 >120~315 = ±1 >315~1000 = ±1.6 ANGLES(角度) = ±5°	CHECKED	 <b>雅鈦企業有限公司</b> Aec Connectors Co., Ltd.	
-	insulator b	1	PTFE	white					DRAWN <i>Jordan</i>
-	body b	1	brass	gold			DATE 2019.05.07		
-	spring	1	piano wire	gold			TITLE SMA JACK-U.FL PLUG TEST PROBE		
-	contact pin a	1	beryllium copper	gold(3u")			DRAWING NO. TPR-1001S-SA25TA-UF15TG		
-	insulator a	1	PTFE	white			FILE NO. DRAWING\RF\TPR\TPR-1001S-SA25TA-UF15TG		
-	body a	1	brass	nickel					
NO.	Description	Unit	Materials	Finish	Drawing No.	SCALE	3 : 1	UNIT	MM