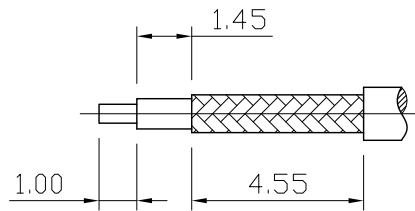
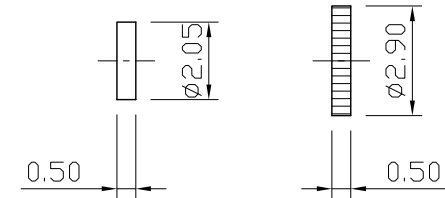
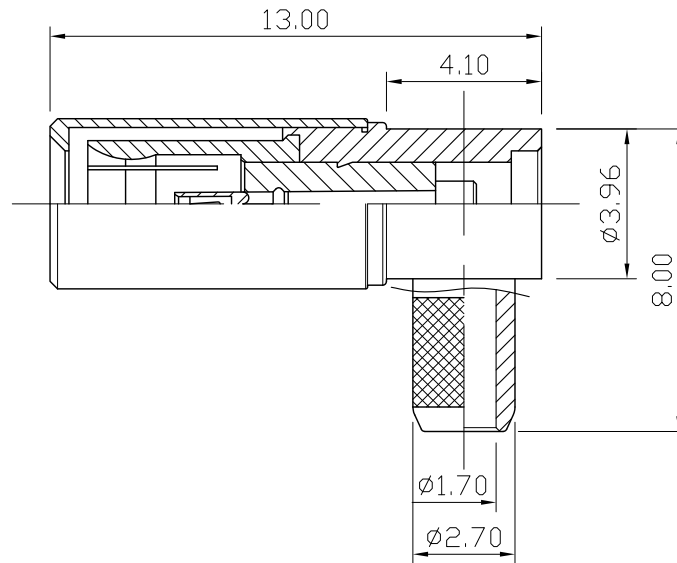
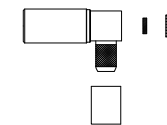
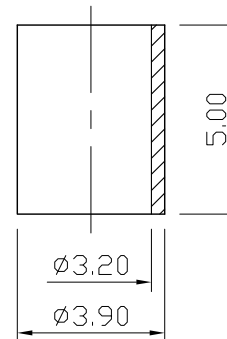


REMARK : RoHS REQUIREMENT APPLIED
(符合RoHS)



RECOMMENDED CABLE STRIPPING DIM'S
(建議剝線尺寸)



S 1 : 1

-	ferrule	1	brass	gold	
-	cap	1	brass	gold	
-	insulator	1	teflon	white	
-	barrel	1	brass	gold	
-	contact pin	1	beryllium copper	gold	
-	insulator	1	teflon	white	
-	body	1	brass	gold	
-	body	1	beryllium copper	gold	
-	shell	1	brass	gold	
NO.	Description	Unit	Materials	Finish	Drawing No.

DIMENSIONS ARE IN
MILLIMETERS
UNLESS OTHERWISE SPECIFIED
TOLERANCES
(一般公差)
0.5~6 = ±0.2
>6~30 = ±0.4
>30~120 = ±0.6
>120~315 = ±1
>315~1000 = ±1.6
ANGLES(角度) = ±5°

CHECKED

DRAWN
Jim

DATE
2011. 09. 26



雅鈦企業有限公司
Aec Connectors Co., Ltd.

TITLE SSMB R/A CRIMP PLUG
FOR RG-179/U

DRAWING NO.
MB-1002GTG-RC1917

FILE NO. DRAWINGRFRMBMB-1002GTG-RC1917

SCALE 5 : 1 UNIT MM