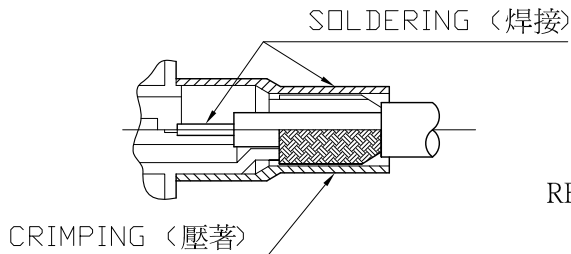
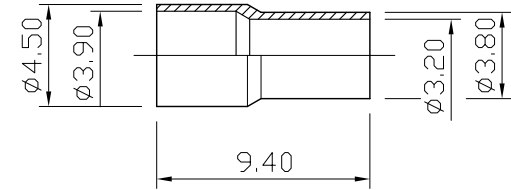
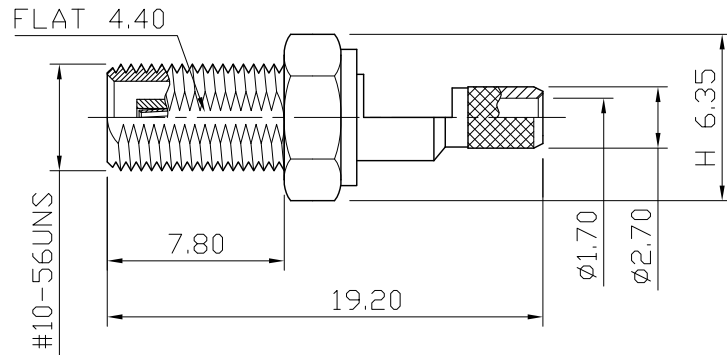
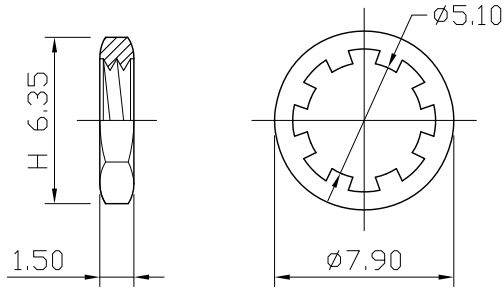
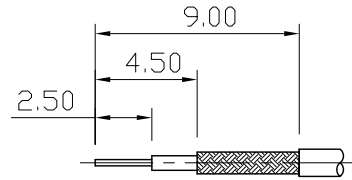


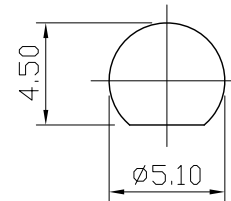
No.	DATE	DESCRIPTION	REV	REMARK : RoHS REQUIREMENT APPLIED (符合RoHS)	DATE	DRAWING NO.
					2009. 01. 16	MCXB-105GG(BeCu)-TEF(50)-174U/188U/316U



USER GUIDE  
(使用指導)

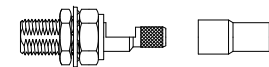


RECOMMENDED CABLE STRIPPING DIM'S  
(建議剝線尺寸)




RECOMMENDED MOUNTING HOLE  
(建議架設孔)

1. CRIMPED FREEULE HEX CRIMP  
SIZE .128" (3.25mm)  
(套管壓著工具)
2. CONTACT PIN TO SOLDER  
(中心針焊接)
3. MAX. PANEL THICKNESS=5.3mm  
(最大板厚)



S 1 : 1

7	nut	1	brass	gold	DIMENSIONS ARE IN MILLIMETERS  UNLESS OTHERWISE SPECIFIED TOLERANCES (一般公差) 0.5~6 = ±0.2 >6~30 = ±0.4 >30~120 = ±0.6 >120~315 = ±1 >315~1000 = ±1.6 ANGLES(角度) = ±5°	CHECKED	 <b>雅鈦企業有限公司</b> Aec Connectors Co., Ltd.		
6	washer	1	brass	gold		DRAWN <i>Lala</i>		TITLE MCX FEMALE BULKHEAD CRIMP FOR RG-174/U,188/U,316/U	
5	frerule	1	brass	gold				DATE	DRAWING NO. MC-1012GTG-SC1725
4	braid holder	1	brass	gold				2008. 02. 18	FILE NO. DRAWING\RFMCX\MC-1012GTG-SC1725
3	contact pin	1	beryllium copper	gold					
2	insulator	1	teflon	white					
1	body	1	brass	gold					
NO.	Description	Unit	Materials	Finish	Drawing No.	SCALE 3 : 1	UNIT MM		