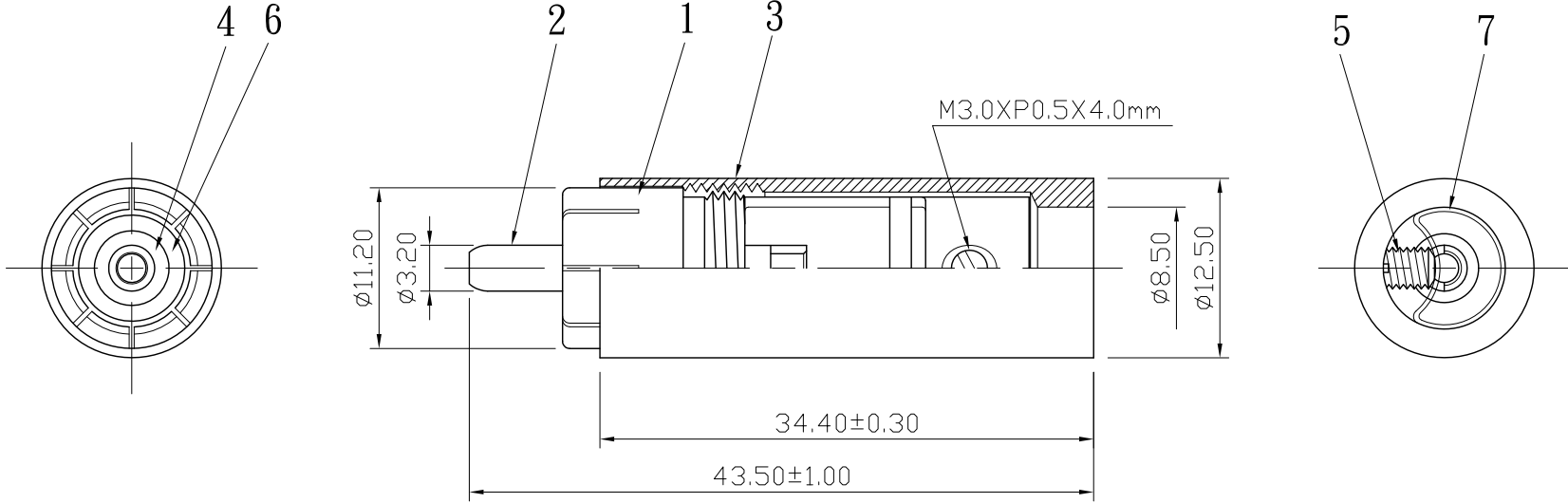



REMARK : RoHS REQUIREMENT APPLIED  
(符合RoHS)



NOTE : 1. HOLLOW CONTACT PIN

S 1 : 1

7	sleeve	1	PVC	transparent		DIMENSIONS ARE IN MILLIMETERS UNLESS OTHERWISE PECIFIED TOLERANCES (一般公差) 0.5~6 = ±0.2 >6~30 = ±0.4 >30~120 = ±0.6 >120~315 = ±1 >315~1000 = ±1.6 ANGLES(角度) = ±5°	CHECKED	 雅鈦企業有限公司 Aec Connectors Co., Ltd.		
6	ring	1	tellurium copper	gold					TITLE	RCA PLUG
5	screw	1	brass	gold	SCREW-103G-M3XP0.5X4.0mm		DRAWN <i>Jim</i>	DRAWING NO.	RP-405PMG(Tc)-TEF-A-8.5	
4	insulator	1	PTFE	white				DATE	2015. 01. 09	FILE NO.
3	shell	1	POM	black						
2	contact pin	1	tellurium copper	gold						
1	body	1	tellurium copper	gold						
NO.	Description	Unit	Materials	Finish	Drawing No.	SCALE	2 : 1	UNIT	MM	