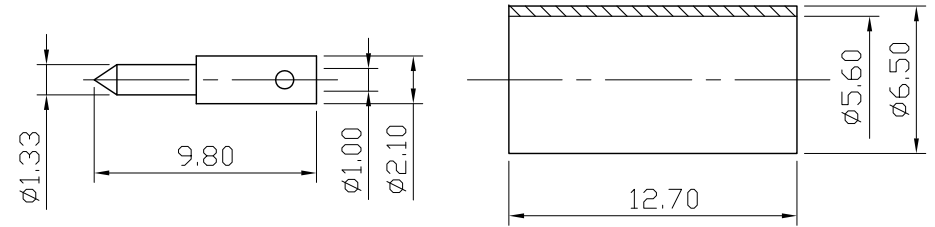
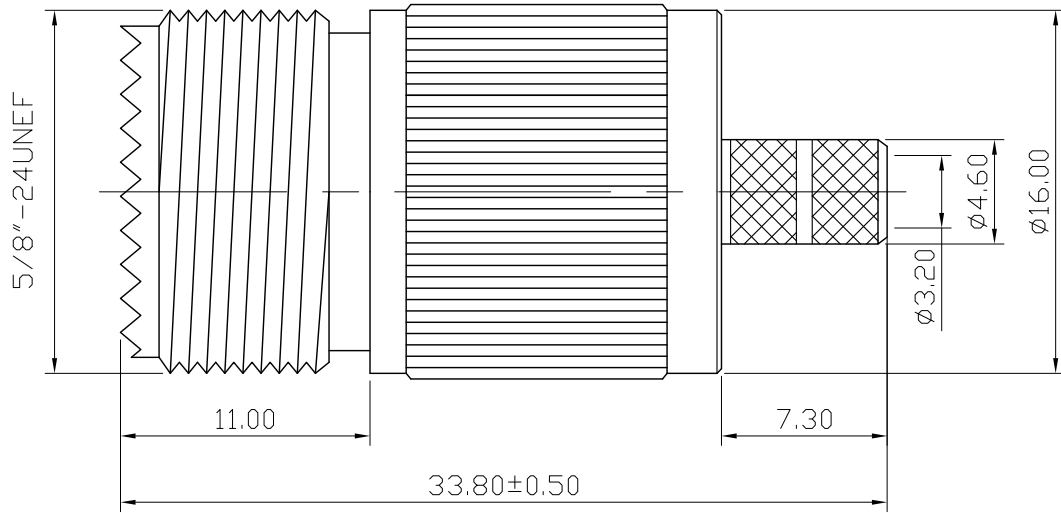
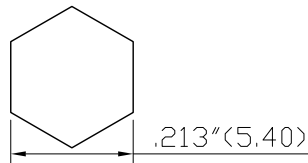


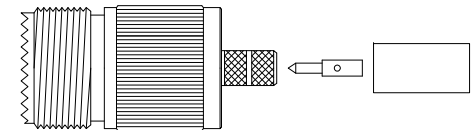
No.	DATE	DESCRIPTION	REV	REMARK : RoHS REQUIREMENT APPLIED (符合RoHS)	DATE	DRAWING NO.
-----	------	-------------	-----	---	------	-------------




Recommended Crimped  
Dimensions For Contact Pin



Recommended Crimped  
Dimensions For Ferrule



S 1 : 1

						DIMENSIONS ARE IN MILLIMETERS			CHECKED	 <b>雅鈦企業有限公司</b> Aec Connectors Co., Ltd.	
						UNLESS OTHERWISE SPECIFIED TOLERANCES (一般公差)			DRAWN <i>Sun</i>		
						0.5~6 = ±0.2					
						>6~30 = ±0.4					
						>30~120 = ±0.6					
						>120~315 = ±1			DATE	TITLE	
						>315~1000 = ±1.6			2014. 12. 03	UHF FEMALE CRIMP FOR RG-58/U	
						ANGLES(角度) = ±5°				DRAWING NO.	
NO.	Description	Unit	Materials	Finish	Drawing No.	SCALE	3 : 1	UNIT	MM	FILE NO.	DRAWINGR\FUS\US-1040NDG-SC1120