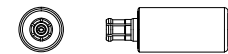
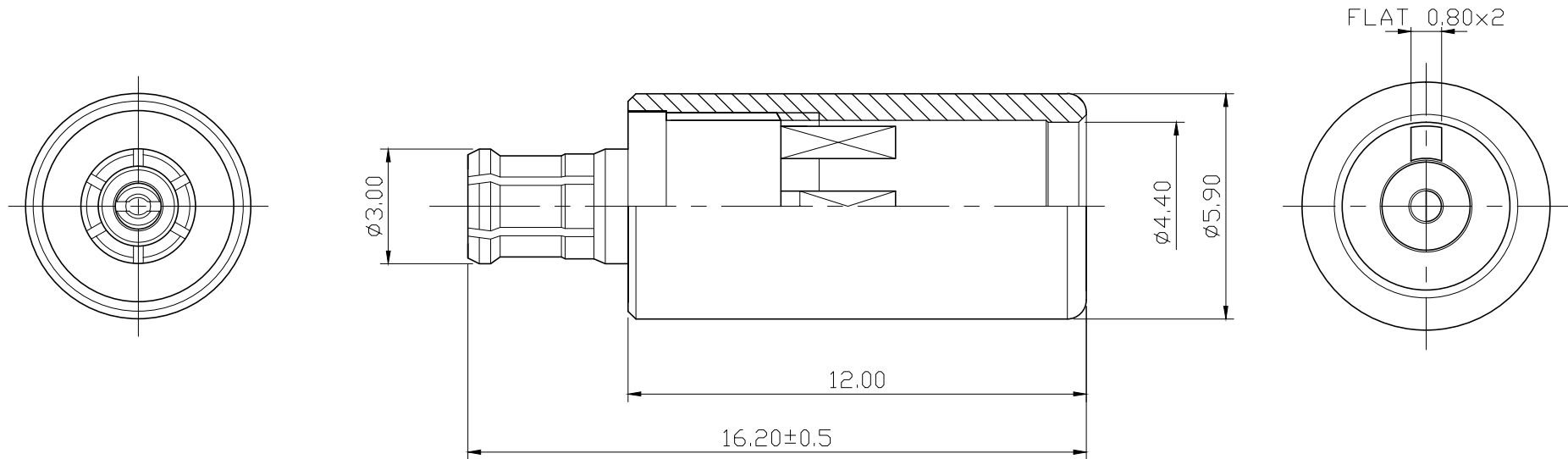



REMARK : RoHS REQUIREMENT APPLIED
(符合RoHS)



S 1 : 1

-						DIMENSIONS ARE IN MILLIMETERS	CHECKED	 雅鈦企業有限公司 Aec Connectors Co., Ltd.	
-									UNLESS OTHERWISE SPECIFIED TOLERANCES (一般公差) 0.5~6 = ±0.2 >6~30 = ±0.4 >30~120 = ±0.6 >120~315 = ±1 >315~1000 = ±1.6 ANGLES(角度) = ±5°
4	shell	1	aluminum	clear anodic treatment			Otis		TITLE IEM PLUG
3	body	1	beryllium copper	gold			DATE		DRAWING NO. IP-310ATG-TEF-4.4
2	insulator	1	PTFE	white			2017. 07. 12		FILE NO. DRAWING\AUDIO\NIP-310ATG-TEF-4.4
1	contact pin	1	beryllium copper	gold					
NO.	Description	Unit	Materials	Finish	Drawing No.	SCALE	6 : 1	UNIT	MM