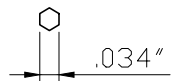
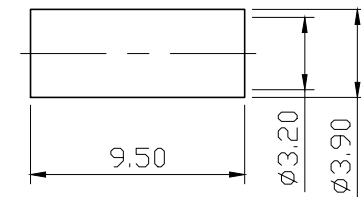
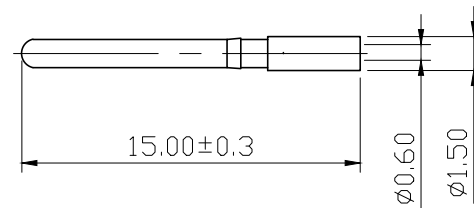
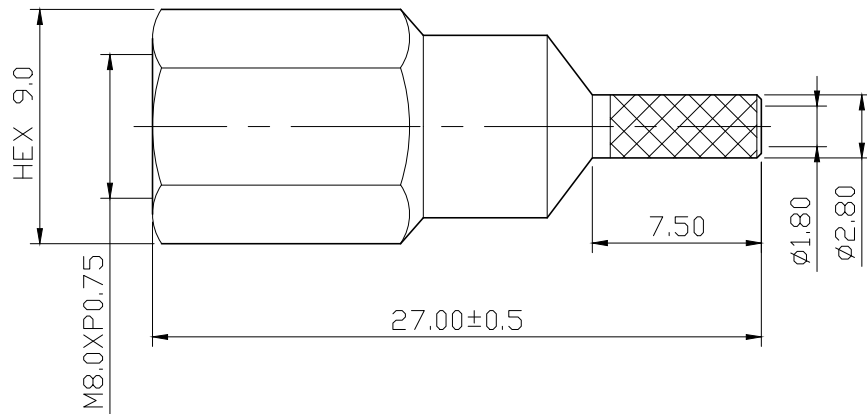
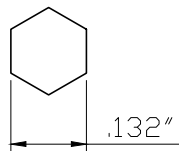


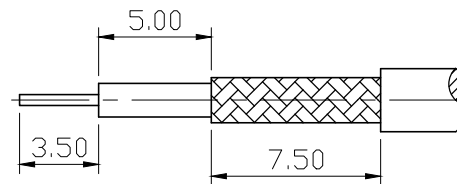
No.	DATE	DESCRIPTION	REV	REMARK : RoHS REQUIREMENT APPLIED (符合RoHS)	DATE	DRAWING NO.
-----	------	-------------	-----	---	------	-------------



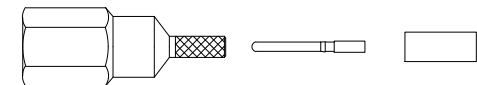
RECOMMENDED CRIMPED DIM'S FOR CONTACT PIN




RECOMMENDED CRIMPED DIM'S FOR FERRULE



RECOMMENDED CABLE STRIPPING DIM'S
(建議剝線尺寸)



S 1 : 1

-						DIMENSIONS ARE IN MILLIMETERS UNLESS OTHERWISE SPECIFIED TOLERANCES (一般公差) 0.5~6 = ±0.2 >6~30 = ±0.4 >30~120 = ±0.6 >120~315 = ±1 >315~1000 = ±1.6 ANGLES(角度) = ±5°	CHECKED	 雅鈦企業有限公司 Aec Connectors Co., Ltd.	
-							DRAWN		TITLE FME STRAIGHT PLUG CRIMP FOR RG-174U,50 Ohm
-							<i>Chad</i>		DRAWING NO. FE-1003NDG-SC1715
4	ferrule	1	brass	nickel			DATE		FILE NO. DRAWING\RF\FE\FE-1003NDG-SC1715
3	contact pin	1	brass	gold		2014. 06. 17			
2	insulator	1	POM	none					
1	body	1	brass	nickel					
NO.	Description	Unit	Materials	Finish	Drawing No.	SCALE 3 : 1	UNIT MM		