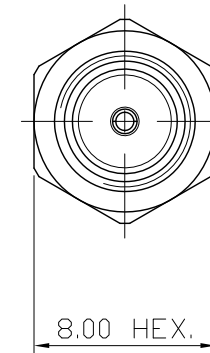
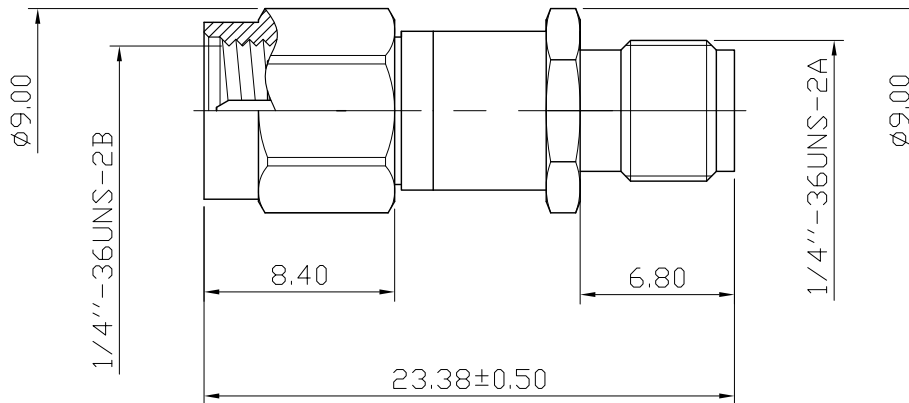
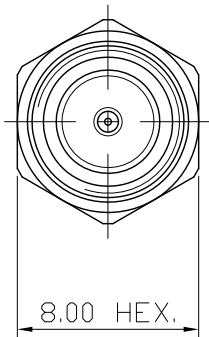


| | | | | | | |
|-----|------|-------------|-----|---|------|-------------|
| No. | DATE | DESCRIPTION | REV | REMARK : RoHS REQUIREMENT APPLIED (符合RoHS) | DATE | DRAWING NO. |
|-----|------|-------------|-----|---|------|-------------|

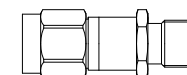


Electrical Characteristic:


1. Frequency Range: 10MHz ~18GHz
2. Blocked DC Voltage: 50V Max.

| Frequency | Insertion Loss | Return Loss |
|--------------|--------------------------|-------------|
| 10MHz ~ 1GHz | 0.2dB Max. | 32dB Min. |
| 1GHz ~ 4GHz | 0.5dB Max. | 25dB Min. |
| 4GHz ~ 8GHz | 0.75dB Max. | 20dB Min. |
| 8GHz ~ 18GHz | 0.75dB Typ. / 1.5dB Max. | 12dB Min. |

| | | | | |
|---|--------------------|---|------------------|-----------|
| - | capacitor | 1 | film | none |
| - | pcb | 1 | FR4 | none |
| - | c ring b | 1 | brass | none |
| - | c ring a | 1 | brass | none |
| - | body b | 1 | stainless steel | passivate |
| - | body a | 1 | stainless steel | passivate |
| - | contact pin female | 1 | beryllium copper | gold(3u") |
| - | contact pin male | 1 | brass | gold(3u") |
| - | insulator | 2 | PTFE | white |
| - | c ring | 1 | stainless steel | passivate |
| - | gasket | 1 | silicone | red |
| - | shell | 1 | stainless steel | passivate |



S 1 : 1

| | | | | | | | | | | | | | | |
|---|-------------|------|-----------|--------|-------------|-------|-------|------|----|------|--------------|---------|--|---|
| NO. | Description | Unit | Materials | Finish | Drawing No. | SCALE | 3 : 1 | UNIT | MM | DATE | 2016. 12. 05 | CHECKED | |  雅鈦企業有限公司 Aec Connectors Co., Ltd. |
| DIMENSIONS ARE IN MILLIMETERS UNLESS OTHERWISE SPECIFIED TOLERANCES (一般公差) 0.5~6 = ±0.2 >6~30 = ±0.4 >30~120 = ±0.6 >120~315 = ±1 >315~1000 = ±1.6 ANGLES(角度) = ±5° | | | | | | | | | | | | | | |
| DRAWN Jordan DATE 2016. 12. 05 TITLE DC BLOCK DRAWING NO. DB-1001S-SA15TP-SA25TP FILE NO. DRAWING\RF\BDB-1001S-SA15TP-SA25TP | | | | | | | | | | | | | | |