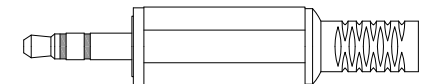
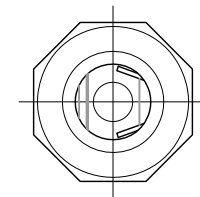
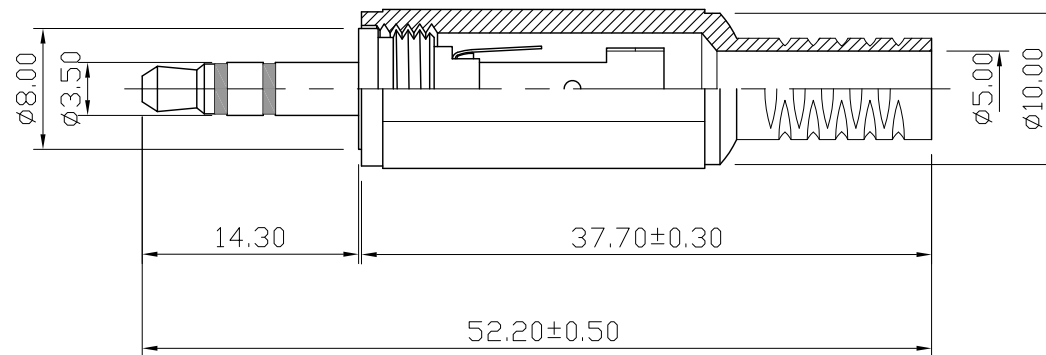
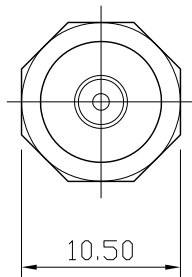


REMARK : RoHS REQUIREMENT APPLIED
(符合RoHS)



S 1 : 1

-	insulator	2	POM	black	
-	solder tab	1	brass	nickel	
-	solder tab	1	brass	nickel	
-	clip	1	brass	nickel	
-	insulator	2	POM	white	
-	shell	1	plastic	black/white	
-	contact pin	1	brass	nickel	
-	body	1	brass	nickel	
-	body	1	brass	nickel	
-	body	1	brass	nickel	
NO.	Description	Unit	Materials	Finish	Drawing No.

DIMENSIONS ARE IN MILLIMETERS			
UNLESS OTHERWISE SPECIFIED TOLERANCES (一般公差)			
0.5~6 = ±0.2			
>6~30 = ±0.4			
>30~120 = ±0.6			
>120~315 = ±1			
>315~1000 = ±1.6			
ANGLES(角度) = ±5°			
SCALE	2 : 1	UNIT	MM

CHECKED
DRAWN <i>Lala</i>
DATE 2007. 12. 17

 雅鈦企業有限公司 Aec Connectors Co., Ltd.	TITLE AUDIO PLUG
	DRAWING NO. AP3.5-252BK/WEPLN-Stereo-5.0
	FILE NO. DRAWING\AUDIO\AP\AP3.5-252BK/WEPLN-Stereo-5.0