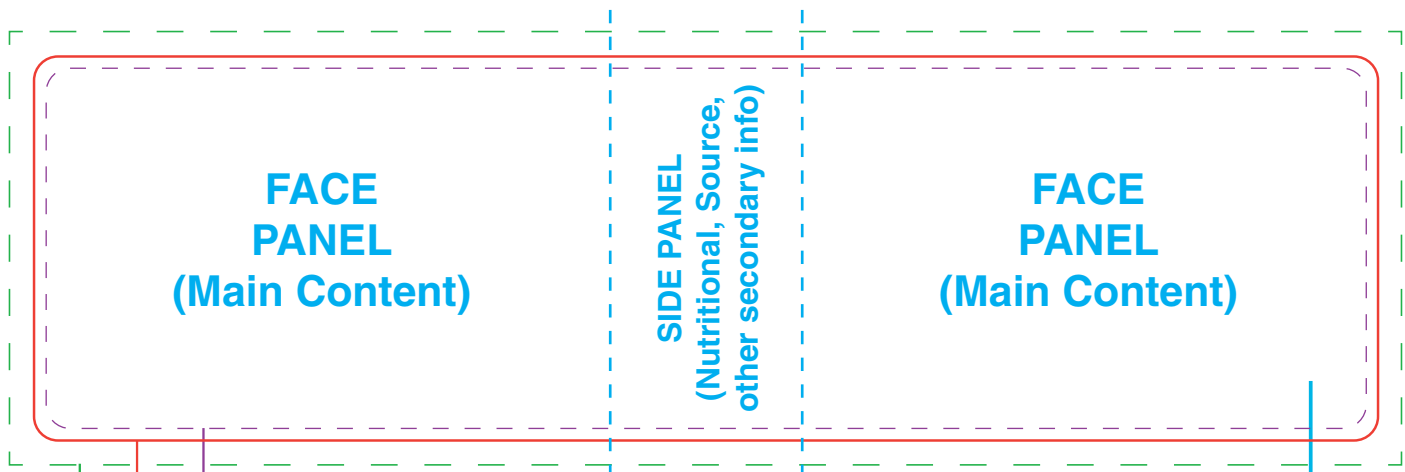




22 Spring Water Blvd. • Brandonville, PA 17967
Phone: 443-288-6401 • Fax: 443-288-6399
email address: art@signaturesprings.com

7" x 2"

WATER LABEL TEMPLATE - ART GUIDELINES 16.9 fl oz (0.5 Liter) Elite (Smooth Walled Bottle) Flexo Printed Pressure Sensitive Label **Limit designs to 4 Process Colors***



Text and Graphics safety. All important items must be contained within the purple line. (6.875 x 1.876 in)
Actual size of final label. Labels will be cut at the red line. (7 x 2 in)

Bleed line. Any graphics or colors that "bleed" off the label must travel to the green line.
Any bleed graphics not extending to the green line will not print correctly. (7.25 x 2.25 in)

PANELS ARE A RECOMMENDED GUIDE FOR WHAT GRAPHICS WOULD BE VISABLE LOOKING STRAIGHT ON AT THE LABEL.
NOTE: When using clear materials, take into account on what you will see when looking through the bottle when designing layout.

General Guidelines

Minimum Type size (Sans-Serif) • 5 pt positive/overprint type • 6 pt Bold reverse/knock out type • All legal Copy Minimum 6 pt

Rules

Minimum for rules: .007" positive/overprinting rule • .021" reverse rule • .015" channel to separate two colors
.015" rule when any colors must trap to it

Minimum Dot

When using screened values or tones it is required to have nothing less than a 2% dot in any area. These minimum dots may not reproduce complete dots which may cause "dirty print" to appear in the finished label.

UPC (Universal Product Code)

Standard Bar Width reduction is .002". DO not make a barcode smaller than 85%. Bar Codes can be printed in either direction. ® and ™ need to be as big as possible due to there tendency to close up when printed.

Any artwork not supplied with the above specifications will be return to be fixed or can be quoted to fix outside original set up charge

Nutrition & Distributor/Source Information

Natural Spring Water
16.9 FL.OZ. (.5 Liter)

Nutrition Facts	
Serving Size 8.0 fl.oz. (240mL)	
Servings per Container: 2	
Calories 0	
Amount Per Serving	% Daily Value*
Total Fat 0g	0%
Sodium 0mg	0%
Total Carbohydrate 0g	0%
Protein 0g	0%
<small>Not a significant source of other nutrients *Percent Daily Values are based on a 2,000 calorie diet.</small>	


Bottled at the source by:
Signature Springs, LLC
Brandonville, PA 17967
NYSHD Cert. #588 • NY 5¢ Deposit
Source: Far Away Springs
Brandonville, PA 17967
Tomhicken Mountain Springs
Hazleton, PA 18201
(800) 449-8780
www.signaturesprings.com


NUTRITION PANEL
Not required by law unless making a nutritional claim.


SOURCE
Required by law. Can be placed anywhere on label.


CA CRV Legal Size
CA CASH REFUND
Required on any orders being shipped into the state of California


ADDITIONAL INFO
Not required by law but may be added as extra info or to create awareness.


PLEASE RECYCLE



BPA Free


PLEASE RECYCLE


K


BPA Free

PLEASE RECYCLE



IMPORTANT INSTRUCTIONS

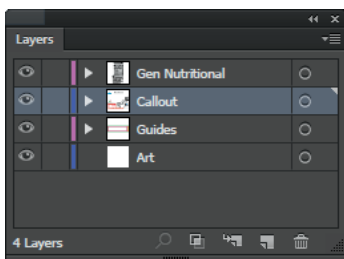
MANDATORY ARTWORK CHECKLIST

- ALL type converted to outlines if not sending fonts
- Remove all unused color swatches from Swatch menu
- ALL art uses CMYK workspace, not RGB
- *The use of Pantone colors will incur extra cost**
- ALL Pantone Colors (PMS) are named correct (Ex. PANTONE 000 C)
- NO low-res images from the web (72dpi)
- ALL supporting images and fonts supplied
- If using screened images or tones (Y,M,C,K) for process work. Count these as separate colors (Ex. Black (Tones) and Line Black (100% Line Art))

ACCEPTABLE ARTWORK FORMATS

We import your artwork into Adobe Illustrator CC

- Illustrator: Please convert all type to outlines. Embed all images
- EPS
- PDF: High Res (300dpi)
- Photoshop: IMAGES ONLY. Create all text in vector. Save in layers or just the art layer. 300dpi CMYK preferred (anything less might appear pixelated).



This file was built in layers (nutrition panel, guides and art) that can be turned on and off. The Art layer is blank to accommodate your art on the correct layer (restacking layers might block other necessary graphics).

Any artwork not supplied with the above specifications will be return to be fixed or can be quoted to fix outside original set up charge