

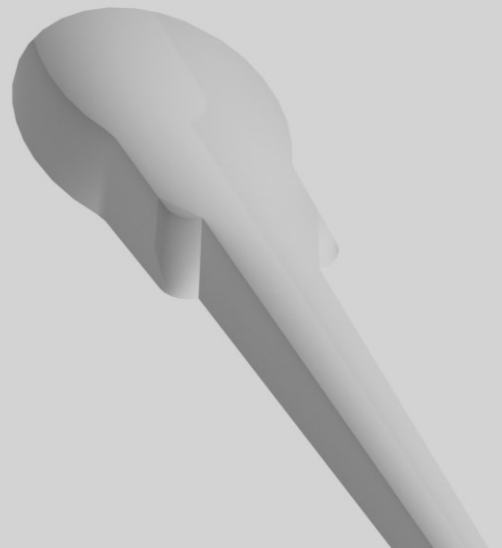
REESE TRACKS

SOLUTIONS TO RECESS SILENT GLISS 5100



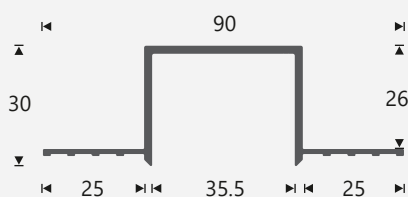
DESIGNED TO DISAPPEAR

Blindspace® Reese Tracks is a perfect fit solution to recess manual and electric curtain tracks. The track and end set are installed flush with the ceiling during construction to form a cavity matching the drapery system and can be painted to match the ceiling. Standard curved sections are available to fit corners, curved walls, bay windows and other applications. When curtain tracks are installed, the result is a minimalist design where curtain tracks fully blend in, flush with the ceiling.

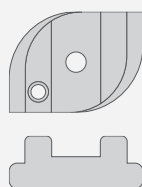


BL'NDSPACE®

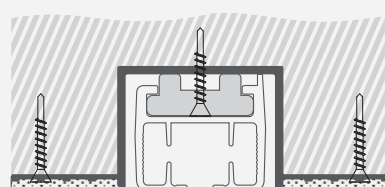
Track with Flanges (RT1F)



Swivel Bracket (TTSG1)



Fixing of REESE Track & Curtain Track



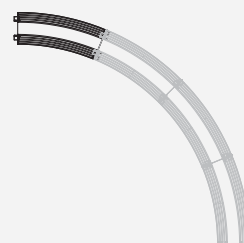
Curve Section 290mm radius (RTCR290)



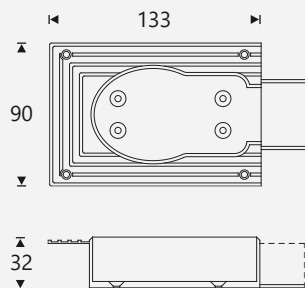
Curve Section 508mm radius (RTCR508)



Custom Curved Track



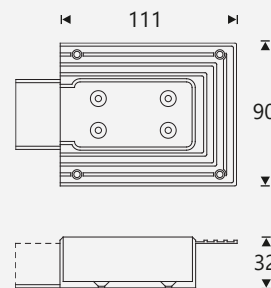
Motor End (SG51MB1F)



Track with Flanges (RT1F)



Return End (SG51RB1F)



Manufacturer

Blindspace AB
Web: www.blindspace.com
Email: sales@blindspace.com
Tel: +44 20 8798 3945

Description

Solutions to recess manual and electric curtain tracks and end sets, with no visible bracketry.

Product Reference

Tracks: RT1F
End-sets: SG51MB1F/SG51RB1F
Curve sections: RTCR290/RTCR508
Example: RT1F with SG51MB1F & SG51RB1F

Fixing

Anchoring with countersink screws through profile and flanges every 200mm. Finished plaster level flush with chamfered edge and ceiling.

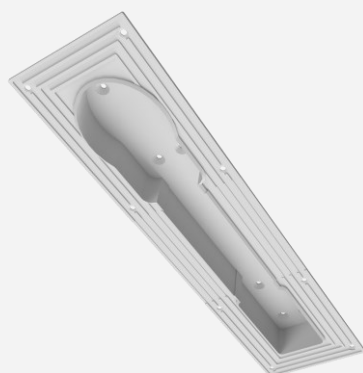
Material

Tracks in Aluminium, EN 6060 T66
End-sets & curves in Plastic POM Polymer

Finish

White to be plastered in and decorated at site to match ceiling.

FEATURES



Centered curtain tracks with no visible fixing brackets

In contrast to solutions using a wedge along the side of the curtain track, REESE tracks are fixed through the curtain track for minimum visual impact.

Perfect-fit end-set to match motor and return ends

End sets are designed and manufactured to perfectly fit with motor and belt return ends.

Seamless appearance after painting

Plaster is feathered over skim coat flanges to hide the track and end-set, leaving only an open cavity for installation of curtain system.

Cut to finished length, maximum 6m

Blindspace REESE Tracks are supplied by manufacturer cut to finished length or in 6m length.



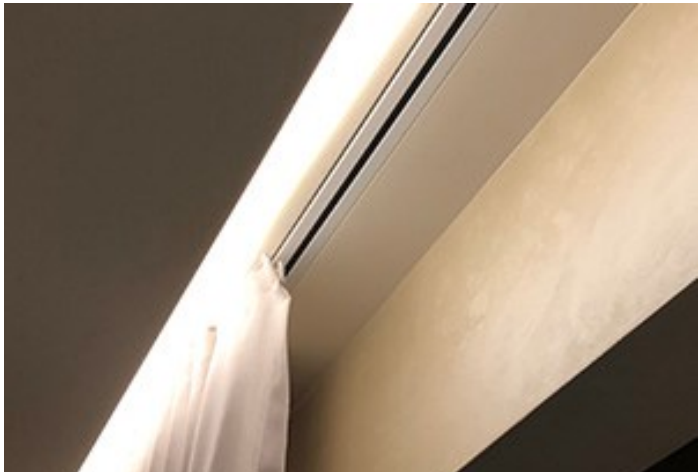
Dual RT1F with SG51MB1F and SG51RB1F, tracks with 180mm spacing.



Dual RT1F with SG51MB1F and SG51RB1F, tracks with 140mm spacing.



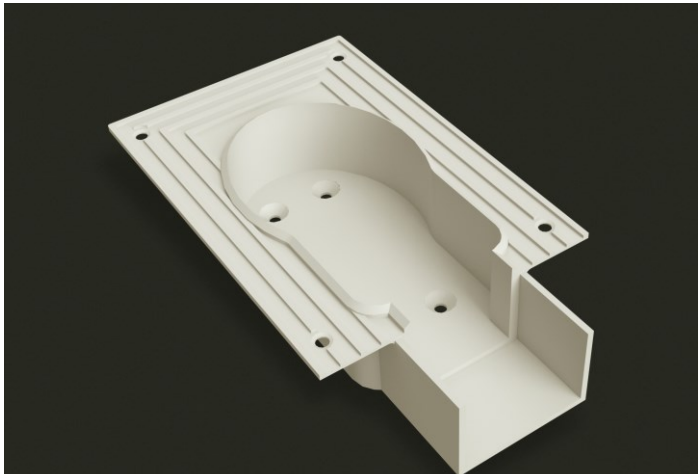
RT1F with SG51MB1F and SG51RB1F, installed in front of box.



RT1F with SG51MB1F and SG51RB1F.



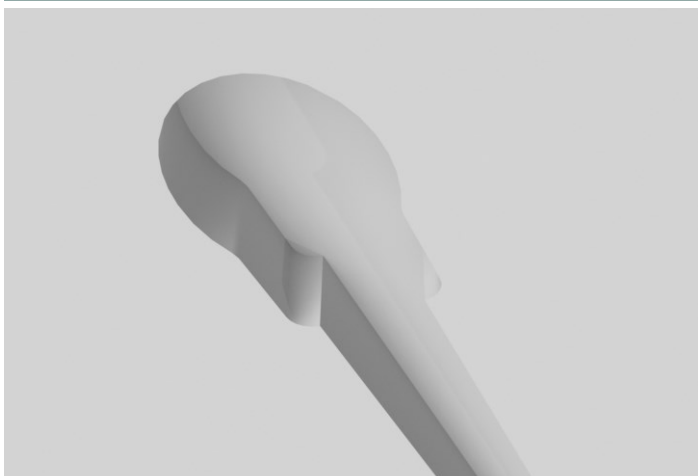
RTCR290 Curve Sections 290mm radius



SG51MB1F sample.



RT1F with SG51MB1F and SG51RB1F.



RT1F with SG51MB1F and SG51RB1F.