



DESIGN AND TECHNOLOGY

CUBIC AUTOMATION IS PLEASED TO ANNOUNCE THAT THEY WILL SOON BE OFFERING THE NEW FANUC CR-35IA COLLABORATIVE ROBOT.

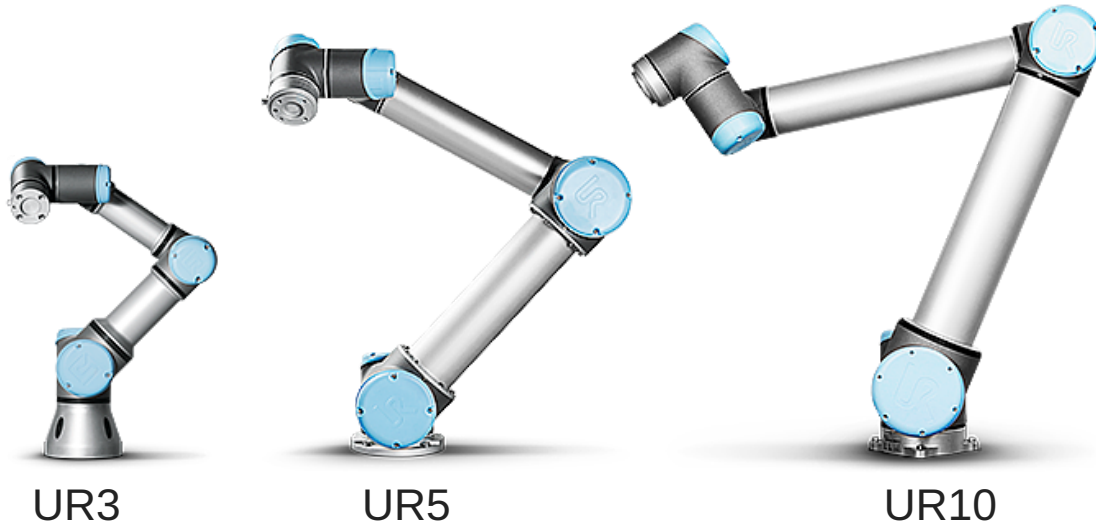
The robot, lovingly referred to as the "Green Fanuc", will be the first collaborative model created by Fanuc, the world's largest industrial robotics company. It will be a great addition to Cubic's existing lineup.



image Copyright by FANUC

Available Universal Robots

Cubic currently offers 3 models of collaborative robots from Universal Robots: UR 3, UR 5 and UR 10. The URs are rated at 3, 5 and 10 kg payload respectively. The UR10 has maximum reach of 4 ft.



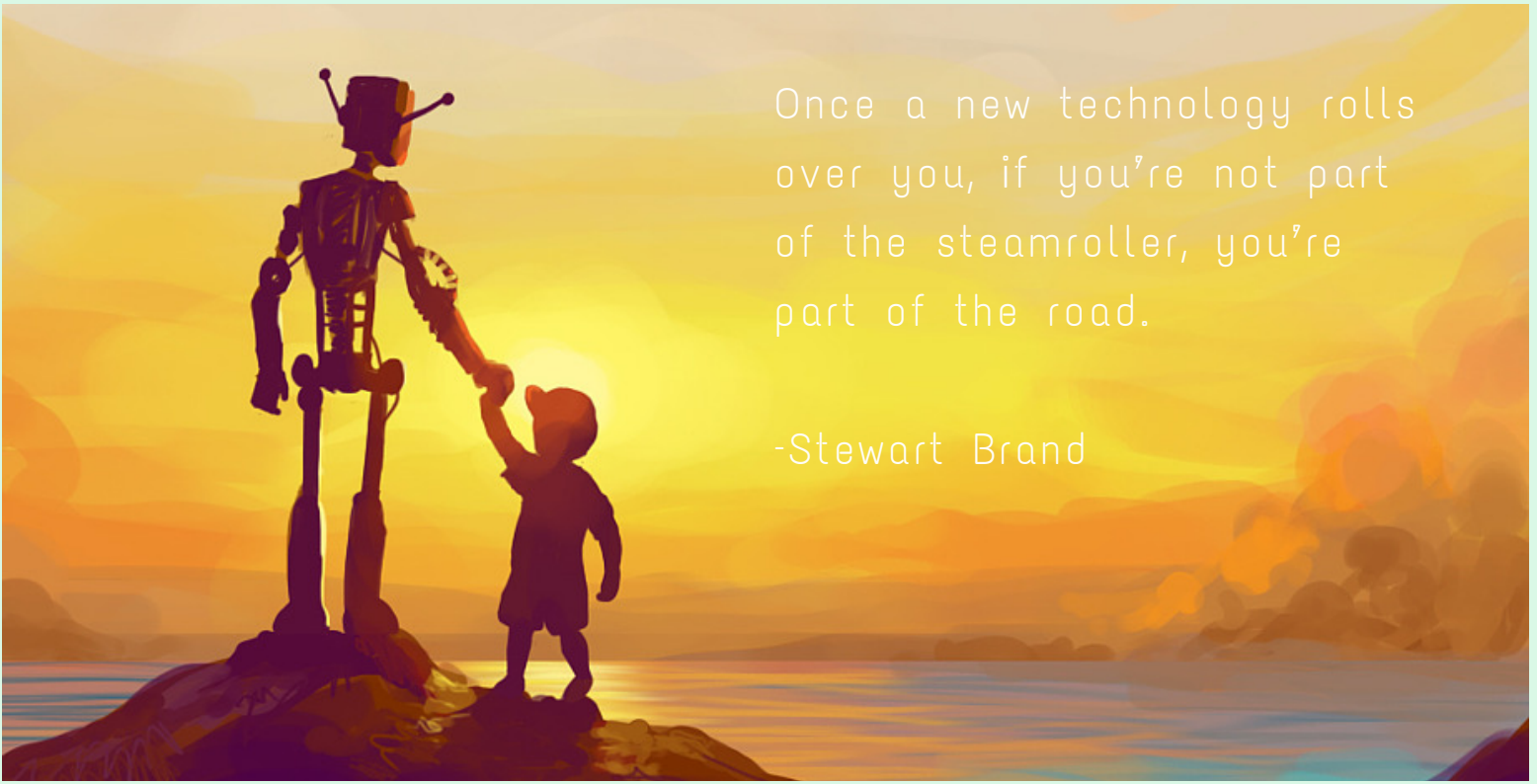
images Copyright by Universal Robot

In contrast, Fanuc CR-35iA is the world's strongest collaborative robot with a 35 kg payload and a reach of 6 ft. This will allow robotic integration in the manufacturing of car rims, larger valves and gears, as well as adding versatility in palletizing and packaging finished products.



images Copyright by FANUC





Once a new technology rolls over you, if you're not part of the steamroller, you're part of the road.

-Stewart Brand

What is a collaborative robot?

The first criteria of a collaborative robot is that it must be able to perform a safety monitor stop. This is a function that continuously monitors forces, and if contact is made with a fixed object or human, a stop is immediately triggered. This allows the robot to be used without a safety cage.

Second, the robot should have hand guidance. Instead of pressing buttons on a teach pendant, the user should be able to guide the robot by hand in an intuitive way. This speeds up training time and allows quick re-deployment of the robot for different tasks.

Next, a collaborative robot should maintain an awareness of its proximity to humans in its surrounding area and be able to adjust the speed of its movements accordingly.

Call Cubic Automation today to discuss how a collaborative robot can clear bottlenecks for shop.