

ProGlass™ NINE Radiopaque Packable Glass Ionomer Restorative Cement

ProGlass™ Nine is a non-sticky condensable high esthetic restorative glass ionomer cement. A high fluoride content and excellent biocompatibility provides good chemical bonding to dentine and enamel with no need for etching. The early resistance to water uptake permits one visit treatment and its radiopacity ensures easy postoperative diagnosis.

With its high mechanical properties Proglass Nine is an ideal posterior filling material.

INDICATIONS

Direct dental restorative material in the treatment of dental caries.

CONTRAINDICATIONS

- Pulp capping
- In rare cases the product may cause sensitivity in some people. If any such reactions are experienced, discontinue the use of the product and refer to a physician

ESSENTIAL INGREDIENTS

Barium, strontium aluminosilicate glass powder, Dried poly (acrylic acid), Aqueous solution of polyacids.

DIRECTIONS FOR USE

Tooth Preparation

- Clean the cavity preparation with pumice and water.
- Rinse thoroughly and dry but do not desiccate. If desired, place a matrix band.

Optional: apply a 20% polyacrylic acid with a brush onto the wet enamel and dentin surfaces for 30 secs. Air dry gently for 10 seconds to remove the volatile components and to disperse the material. For pulp capping, apply a small amount of calcium hydroxide liner.

Mixing and Dispensing

Capsule System

- Prior to activation, slightly shake capsule or tap its side on a hard surface to loosen the powder. (Figure 1)
- To activate the capsule, gently press the plunger on the bottom of the capsule until it is flush with the main body. (Figure 2)
Note: The capsule should be activated just before mixing and used immediately.
- Place capsule into amalgamator and mix for 15-20 sec (Figure 3).
Note: Mixing time is affected by amalgamator. If you find the mixed material to be too loose or dry, increase or reduce mixing time by 2 secs. at a time in order to achieve the desired consistency.
- Remove the capsule from amalgamator and place tip (Optional, if removed. Figure 4). Load into capsule applicator.
- Place capsule into capsule applicator and extrude onto designated surface. Click trigger of applicator 2 times to prime the capsule. Click once more to extrude material. No need for excess force. (Figure 5)



figure 1

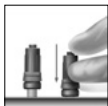


figure 2



figure 3

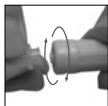


figure 4



figure 5

SPECIAL ATTENTION: To ease insertion of capsule into amalgamator, application tip can be unscrewed prior to placing. Screw tip back on capsule immediately after triturating

Powder / Liquid System

- To obtain a suitable consistency, mix powder and liquid according to the quantities indicated on the powder cap using the spoon included.
- Shake the bottle to loosen the powder. Overfill the spoon with the powder, level the spoon and place onto the mixing pad. Avoid compressing powder into the spoon.
- Turn the liquid bottle vertically with the tip about 5 cm above the mixing pad. Steady your hand and squeeze the bottle gently to dispense drops. If any bubbles are present, lightly tap the bottle with the fingers holding it. Discard drops that are obviously not full sized.
- After use, tightly close both bottles.
- Divide liquid and powder into 2 equal parts. Spread the liquid across the mixing pad and mix the first half with the whole of the liquid for 15 sec. add the second part and mix for 15 sec to obtain a homogeneous mixture. The mixed cement should be thixotropic and have a smooth consistency and glossy appearance. Total mixing time is 30 secs.

Note: Higher temperatures will shorten the working time, lower temperatures will prolong the working time. An overextended working time will cause the loss of adhesion to the dental enamel and the dentin.

Filling and Finishing

- a. Remove moisture from the cavity surface either with a cotton pellet or very gently with an air syringe. Do not desiccate the dentine and enamel surfaces.
- b. Place the mixed cement into the cavity with an empty AppliTip within the working time (2.30-3.00 min.). Make sure that no air bubbles will be incorporated.
- c. Form the material with a placement or forming instrument. Optional to use a matrix strip to form the surface. If a matrix strip is placed, do not remove it before end of net setting time (3.30-4.30 min).
- d. Final finishing and polishing can begin under water spray for about 4.30 min from the start of the mixing by progressing from steel burs at low speed to super ne diamond points.
- e. Apply a final coating of varnish of your choice to the final finished surface of the restoration and instruct the patient not to expose it to any pressure for one hour.

SHELF LIFE

The lot number & expiry date are indicated on the product. Do not use after expiry date.

PRECAUTIONARY INFORMATION FOR PATIENTS

Avoid use of this product in patients with known allergies to Glass Ionomers and / or Polyacrylic Acid. If prolonged contact with oral soft tissues occurs, flush with large amounts of water.

PRECAUTIONARY INFORMATION FOR DENTAL PERSONNEL

Do not mix the powder or liquid of ProGlass Nine with any other glass ionomer products.

Use of protective gloves and a no touch technique is recommended.

In case of allergic reactions immediately stop the application and advise the patient to consult a physician.

Do not allow the cement mixture to contact the oral tissues or skin. In case of contact, remove the material with absorbent cotton soaked in alcohol and rinse with water.

In case of eye contact, immediately flush with water and seek medical treatment.

Direct contact with eugenol-based products is to be avoided. Eugenol slows the setting of glass ionomer cements.

CAUTION

U.S. Federal Law restricts this device to sale or use on the order of a dental professional.

STORAGE & DISPOSAL

Store in a cool and dark place / room temperature (5-30°C / 41-86°F) away from direct sunlight.

Do not store material in proximity to eugenol containing material.

Protect powder from moisture and carefully close powder bottle after use.

See the Safety Data Sheet (available at www.silmetdental.com or through your local subsidiary) for disposal & safety information.

WARRANTY

Silmet Ltd. will replace product that is proven to be defective. Silmet Ltd. does not accept liability for any damage or loss, direct or consequential, arising from the use of or inability to use the product described. It is the responsibility of the dentist to determine before use, the suitability of the product for its intended use. The dentist assumes all risk and liability in connection therewith.

For instructions in additional languages:

- FR** Pour des instructions dans d'autres langues:
- DE** Die Anleitung in weiteren Sprachen:
- ES** Para obtener las instrucciones en otros idiomas:
- IT** Per istruzioni in altre lingue:

www.silmetdental.com/downloads/downloads_instruction



Silmet Ltd.

12 Hassadna st., Or-Yehuda, 6022011, Israel

Tel: 972-3-7353000, Fax: 972-3-5331581, info@silmet.co.il, www.silmetdental.com



Obelis s.a

Bd. General Wahis 53. 1030 Brussels, Belgium

Tel: + (32) 2.732.59.54 Fax: + (32) 2.732.60.03, E-Mail: mail@obelis.net

SILMET