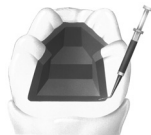


ProLink™ UNIVERSAL DENTAL ADHESIVE

CE
0473

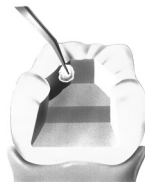
1.
Etch enamel and/or
dentin for 5 – 10 secs



2.
Rinse with oil free water
for 5-10 secs



3.
Blot dry excess moisture
from the surface and
verify that the surface is
completely moisture free.



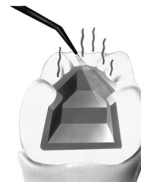
4.
Dispense ProLink™
directly onto a brush or
micro brush by holding
the brush tip directly over
the nozzle of the tilted
bottle.



5.
Apply an ample amount of
ProLink™, leave
undisturbed for 15secs.



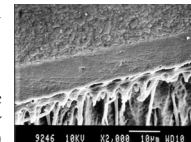
6.
Remove solvents with a
vigorous blast of air for
at least 15secs or until
no visible movement of the
resin is noted. If the
surface appears
incompletely coated,
apply additional material.



7.
Cure ProLink™ with a
visible light cure unit for
20secs.



8.
When the restoration
retention area lies
primarily within
dentin, apply a
second layer. Remove
solvents immediately
and light cure for 20
seconds.



9.
Restore with visible
light cured or self
cure composite resin
of your choice or
cement restoration
with composite resin
cement.

ProLink™ UNIVERSAL DENTAL ADHESIVE

CE
0473

ProLink™ is a single step bonding agent that delivers outstanding shear bonding values to dentin, enamel & all popular light, dual or auto-cure composites. ProLink™ utilizes advanced Colloidal Glass Technology to provide a first class dental adhesive.

Indications

Direct Composite or compomer restorations
Adhesive cementation
Composite repair

Essential Ingredients

Triethyleneglycol dimethacrylate
Aliphatic polyester urethane acrylate
Adhesive accelerator
Hydroxyethyl methacrylate
Glutaraldehyde
Photoinitiators
Acetone

Instructions for Use (see illustrations)

Tooth Preparation

Prepare the tooth according to clinical requirements

Etching

1. Etch enamel and/or dentin for 5 – 10 secs
2. Rinse with oil free water for 5-10 secs
3. Blot dry excess moisture from the surface and verify that the surface is completely moisture free.

Application of ProLink™

1. Dispense ProLink™ directly onto a brush or micro brush by holding the brush tip directly over the nozzle of the tilted bottle.
2. Apply an ample amount of ProLink™, leave undisturbed for 15secs. Remove solvents with a vigorous blast of air for at least 15secs or until no visible movement of the resin is noted. If the surface appears incompletely coated, apply additional material.
3. Cure ProLink™ with a visible light cure unit for 20secs.
4. When the restoration retention area lies primarily within dentin, apply a second layer. Remove solvents immediately and light cure for 20 seconds.
5. Restore with visible light cured or self cure composite resin of your choice or cement restoration with composite resin cement.

Shelf Life

Shelf life: 2 years when stored at 20°C (68°F)

Caution

For Dental Use Only

ProLink™ contains polymerizable monomers which may cause allergic contact dermatitis in susceptible persons.

Wash thoroughly with soap and water after contact. If skin sensitization occurs or if known allergy to methacrylate resin exists, discontinue use.

Using protective gloves is recommended.

In case of accidental contact with eyes or prolonged contact with oral tissues occurs, flush immediately with a large amount of water.

Storage

ProLink™ is designed for use at room temperature (20-24°C) and should not be stored at elevated temperatures or under intense light.

The lot number & expiry date are indicated on the product.

Do not use after expiry date.

Warranty

Silmel Ltd. will replace product that is proven to be defective. Silmel Ltd. does not accept liability for any damage or loss, direct or consequential, arising from the use of or inability to use the product described. It is the responsibility of the dentist to determine before use, the suitability of the product for its intended use. The dentist assumes all risk and liability in connection therewith.

SILMET LTD. 12 Hassadna St. Industrial Park. Or-Yehuda 6022011 Israel

Tel: 972-3-7353000 Fax: 972-3-5331581

info@silmet.co.il; www.silmeldental.com

Diadent, 2 bis chemin du Loup, 93290 Tremblay-en-France. Tel. 33 1 48012710 Fax. 33 1 42465230