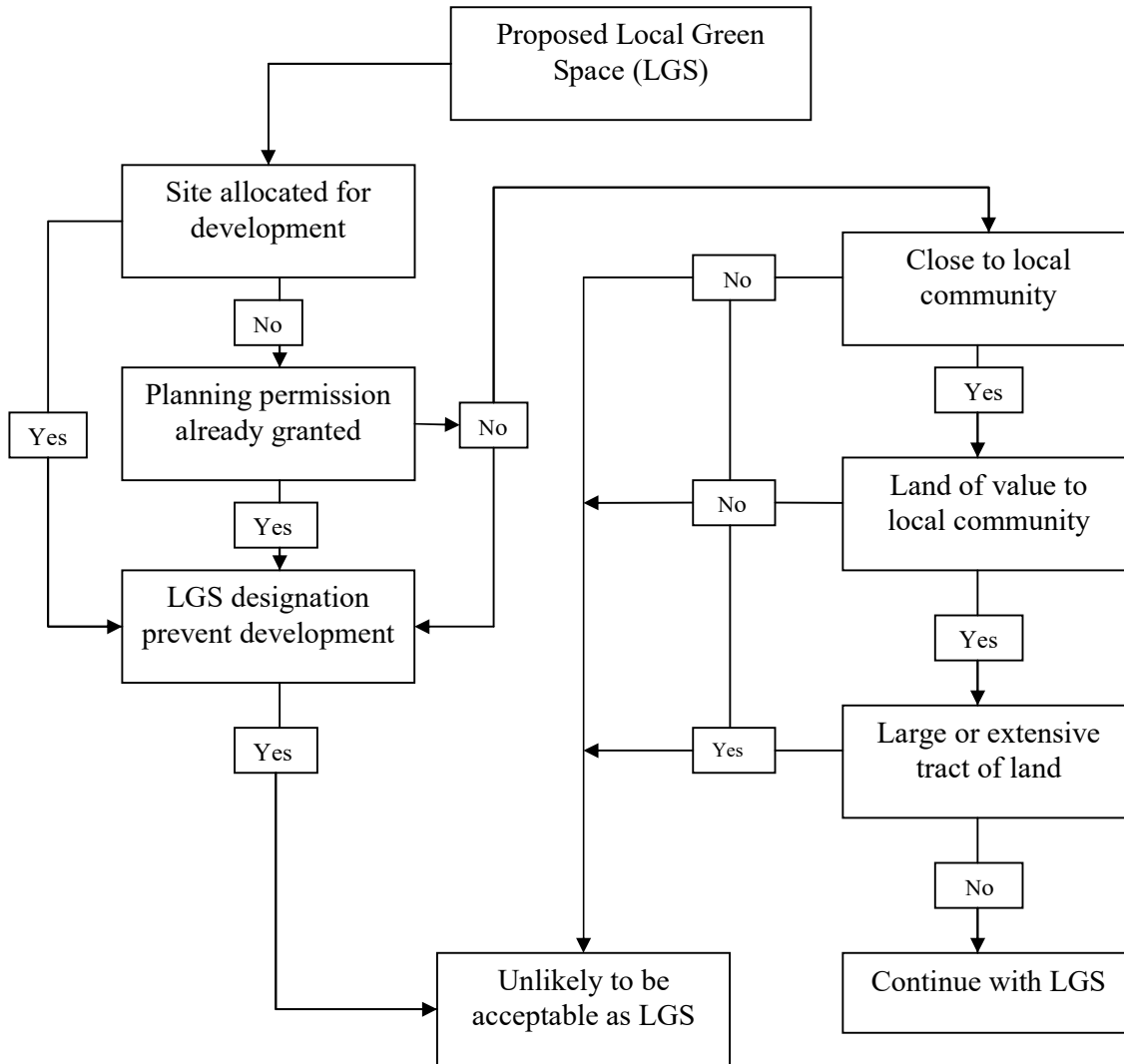


ENVIRONMENT SECTION

INITIAL LOCAL GREEN SPACE SELECTION GUIDE.



LGS selection methodology

Neighbourhood Plan Environment section considers designation, reviewing the evidence provided and decide whether the site is suitable and whether any additional evidence is required. This may including site visits and field survey if relevant.

Acknowledging not every potential site will meet every criterion, however all sites must meet the following criteria in the checklist -

Not with an extant planning permission within which the Local Green Space could not be accommodated

Not allocated for development in the relevant Neighbourhood Plan, unless it can be shown that the Local Plan housing allocation is not strategic and can be re-located somewhere else in the neighbourhood plan area; or alternatively that the Local Green Space could be incorporated within the site as part of the allocated development

Not an “extensive tract of land” (sites over 20ha are considered too large).

Be “local in character”

Be in “proximity to the community it serves”

Be “demonstrably special to the local community”

All sites must meet at least one of the following criteria in the Checklist -

“particular local significance ... because of its beauty”

“particular local significance ... because of its historic significance”

“particular local significance ... because of its recreational value”

“particular local significance ... because of its tranquillity”

“particular local significance ... because of its wildlife”

“particular local significance ... for any other reason”

Once criteria met, complete a site citation for inclusion within the Burbage Neighbourhood Plan available documents on Plan4Burbage.co.uk.