

Work starts on bike trails, stage two funded



The Omeo community was thrilled to officially mark the beginning of construction of the Omeo MTB Trails and welcome the announcement from Parliamentary Secretary for Regional Victoria, Danielle Green and Mayor Cr Mark Reeves for stage two funding on 10 June. See more page 4.

Council considers feedback, adopts budget

Council adopted the 2022-23 Budget at the Council meeting on Tuesday 28 June.

In considering community feedback, the 2022-23 Budget features some changes to what was presented to the community for feedback in the draft Budget.

More than 400 community members and groups took the opportunity to provide a range of feedback on the draft. Councillors read and considered all this feedback, along with verbal feedback Councillors

received from residents during their day-to-day interactions. A large crowd attended and some community members took the opportunity to speak passionately to the meeting.

Capital Works Program

Amendments made to the final 2022-23 Budget included an increase in the value of the Capital Works Program from \$91.4 million to \$104 million.

Mayor Cr Mark Reeves said the capital works budget was about

three times larger than usual – it usually sits around \$32-\$42 million. "It is important to note Council's contribution to the capital works budget has not increased. All of the increase has come from our work to secure state or federal grants. These are mostly competitive grants that we have been able to attract to East Gippsland for projects that we know are a priority for the community. The grant income for our capital projects is \$53 million.

Continued page 2 >>>

Acknowledgement of Country

East Gippsland Shire Council acknowledges the Gunaikurnai, Monero and Bidawel people as the Traditional Custodians of the land that encompasses East Gippsland Shire. We pay our respects to all Aboriginal and Torres Strait Islander people living in East Gippsland, their Elders past and present.

Capital projects top \$100m

From page 1

"These major projects include the Bairnsdale Airport upgrade, which will play an important role in emergency services and attracting commercial aviation. The capital works program also mean we will continue to provide sporting facilities that meet current standards. The program also includes projects that support communities that have been bushfire and COVID affected," Cr Reeves said.

Rates and charges

The rate waiver for eligible properties where the main dwelling was destroyed or deemed uninhabitable as a result of the 2019-20 bushfires will continue for the 2022-23 and 2023-24 years. The Budget includes an increase to total rates and the municipal charge of 1.75%, meeting the Victorian Government's Fair Go Rate Cap. However, individual rates vary and the change may be higher or lower than the average rate and municipal charge increase of 1.75%.

"Property valuations are not used to generate more rates for Council. They indicate where valuations have risen and fallen - and Council adjusts each property's rate contribution based on these changes," Cr Reeves said.

In dollar terms, Council will raise \$54.6m from rates and the municipal charge.

Council will generate approximately \$42.5m from residential, \$5.8m from commercial/industrial, and \$6.2 m from farm ratepayers.

Council has heard feedback from the community and amended the farm rate differential discount, increasing the discount to 20%. The farm rate differential will be 80% of the general rate.

Raymond Island Ferry

"Council has recognised the importance of the ferry service to the Raymond Island community; however, we also recognise the ferry's significant cost needs to be

somewhat met by ferry passengers," Cr Reeves said.

Councillors heard from many concerned residents about the proposal to reduce the number of free annual passes from two to one. An amendment has been made to the budget, allowing owners of developed properties who receive a concession on their rates to apply for a free second annual pass.

"We have also decided to remove the proposed \$2 charge for pedestrians," Cr Reeves said.

Waste levy

The levy is a direct response to a significant increase in the Victorian Government's landfill levy that is imposed on Council's landfills. This is the second year that the Victorian Government has imposed such a significant increase which will increase Council's landfill costs by almost \$1 million.

Council received minimal feedback on the proposed waste levy and it was included in the adopted Budget. The \$37 levy applies to all rateable properties that receive a municipal charge.

Domestic waste collection charges will remain the same as in the 2021-22 year as do its waste facility fees and charges.

"Thank you to everyone who took the time to make a submission on our draft budget. The Budget balances the community's - and Council's - aim to continue to deliver services, and build, upgrade and maintain infrastructure to meet the needs of our region now and into the future," Cr Reeves said.

"Council is very aware many people have had a difficult few years. The current economic climate is also raising uncertainty about what the future holds. Council is confident the Budget is financially responsible and will continue to seek opportunities to reduce costs while maintaining service standards."

Read more on our website.

Council meeting in brief

At the Council meeting June 28, Council:

- Welcomed a large turnout of residents and ratepayers to the public gallery, including Paige Coverdale from Bairnsdale west Primary school, who is undertaking the Rotary Junior Community Award.
- Adopted the Council Budget 2022-23, 10-Year Financial Plan 2022-23 to 2031-32 and Four-Year Revenue and Rating Plan 2022-23 to 2025-26.
- Made amendments to the Council Plan 2021-25 which improve readability and updates 2022-23 strategic indicators.
- Endorsed the Annual Action Plan 2022-23.
- Adopted the Audit and Risk Committee Annual Work Program 2022 and Internal Audit Program 2022-23.
- Adopted the draft Council Asset Plan 2022-32, which includes plans for key elements of our more than \$1.2 billion of infrastructure assets, including bridges and major culverts; open spaces; drainage; waste; buildings; and roads and footpaths.
- Adopted the Environmental Sustainability Strategy 2022-2032.
- Awarded contracts for landfill environment monitoring and waste and recycling trailer service.
- Backed an upgrade, with funding via a Black Summer Bushfire grant, of the Omeo Recreation Reserve netball courts as well as the provision of a tennis court.

Read minutes here>>>

or watch on YouTube





Genoa beaming with new pedestrian bridge

The Genoa Pedestrian Bridge is open, and the community is connected again!

A key piece of infrastructure for the town, the new footbridge has been hailed as a boon for the district. About 150 people joined Mayor Cr Mark Reeves for the opening on Saturday, May 28.

We worked with the community to replicate parts of the former bridge in the design. The new bridge picks up on elements of the old timber truss bridge, with the white steel trusses a great feature and nod to the past.

The destruction of the historic 94-year-old bridge in the Black Summer Bushfires greatly impacted the community. It had served as an important pedestrian link between the popular wayside stop, playground and tennis court, and the township.

The new 117-metre bridges re-establishes the connection across the Genoa River.

Providing access for residents and visitors is especially important. After a challenging couple of years, Genoa residents can now socially and physically reconnect and be even prouder of their town.

Mayor Cr Mark Reeves cuts the ribbon with Wilma Becker, the oldest resident in Genoa, to officially mark the opening of the new footbridge.

Before it was lost, the bridge was one of five surviving timber truss bridges in the state. There was a deep sense of loss when the historic bridge had been damaged beyond repair. It was heartbreaking, but the new footbridge will enhance the area and help raise the town's profile by attracting people back to the park.

The community, led by the Genoa Town Committee, has strongly advocated for the project, and we thank everyone involved for their input.

Most infrastructure and bushfire recovery projects usually have a portion of external government grant funding, although this project is different – Council funded the entire \$1.5 million project.

The bridge was constructed by local firm Jarvis Norwood, and the project was met with some challenges along the way with mother nature, COVID-19, plus the construction supply chain demands.

The opening of the Genoa Pedestrian Bridge was a great cause for celebration on many fronts!

Great outcome result of cooperation

Work on the Omeo Mountain Bike Trails Project has shifted into top gear with Council hailing a major funding announcement that guarantees the trails will get built and will transform the alpine town.

To mark the official start of the 56km Stage 1 of the project, Parliamentary Secretary for Regional Victoria Danielle Green, representing Minister for Regional Development Mary-Anne Thomas, also announced \$3.2 million in funding to deliver the off-road cycling project's second and final stage.

Mayor Cr Mark Reeves applauded the announcement and noted the great cooperation between shire, state and national government in funding the project, with the combined package totalling \$9.72m.

Stage 2 works will create an additional 65km of bike trails, creating 121km of connected tracks that will meet Mountain Bike Australia criteria for national events and include cross-country and



Mayor Cr Mark Reeves, Parliamentary Secretary for Regional Victoria Danielle Green, and Deputy Mayor Cr Arthur Allen at the announcement of stage two funding for the Omeo MTB Trails.

downhill tracks for beginners through to experienced mountain bikers.

The Omeo Mountain Bike Trails is expected to generate upwards of 10,000 visitors in its first year.

All of the trails will connect to Omeo, bringing a much-needed economic boost to the township and boosting the town's reputation as a year-round tourism destination.

The Omeo Mountain Bike Trails Project is funded by Council, the federal government's Building Better Regions Fund and Local Roads and Infrastructure Program Phase 3, and the Victorian Commonwealth Government's Regional Tourism Infrastructure Fund through Regional Development Victoria.

Check your wood heater smoke

Did you know if a wood heater is used incorrectly the smoke it generates can cause issues for people nearby, including neighbours and people travelling past?

If you have a wood heater and it emits excessive smoke, it can be considered a nuisance.

Following these tips will help minimise the smoke from a wood heater:

- Always burn dry seasoned wood as fuel - unseasoned wood contains a lot of moisture and will cause excessive smoke and your flue will clog more quickly.
- To season wood yourself, stack it in a dry, well ventilated area for at least 8 to 12 months

- When lighting a cold heater, always use sufficient kindling to establish a good fire quickly
- Use small logs - three or four small logs will burn more efficiently than one large log, producing more heat and less smoke
- Make sure your fire only smokes for a short time when you first light it or when you add extra fuel - you can help keep this to a minimum by opening the air intake fully for 15 to 20 minutes whenever you reload your fire
- Never leave your heater to smoulder overnight. This starves the fire of oxygen, producing more smoke and air pollution.

- Go outside and regularly check your chimney - if there is smoke your fire needs attention. Adjust the fuel load and increase the air settings.

Remember to never burn plastics in a wood heater.

If you are experiencing smoke issues from a neighbour's heater, see **our website** or contact us for ways to address your concerns.



Getting to know...Ian Cameron, Project Supervisor - Structural and Civil Projects



Our Project Supervisors are vital to the success of our major works. And the one person who keeps track of these major projects is Ian Cameron. We spoke to Ian about his role.

As Project Supervisor you're currently working on what is perhaps the most exciting project in the shire - Omeo Mountain Bike Trails. The project has just broken ground - what can we look forward to?

The Omeo MTB project is on the cusp of bringing all the theory and design into reality. There are still some things to be completed before trail building commences in September.

During this period, the contracts and their consultants will ensure that environmental, cultural and historical requirements are adhered to. This involves walking every metre of every trail! Once the site works commence our contractor Common Ground Trails will have multiple crews building trails. Planning is being finalised so we can progressively open trails from the first half of 2023 onwards.

What do you love about your role and the projects you work on?

I enjoy unique and challenging projects, the Omeo MTB project definitely fits into that bracket.

It's very rewarding to develop a project idea through design, construction and into reality - meeting its objectives to benefit end users and community.

Ensuring that communities have a say about projects is important.

Part of my role in any project is to provide an outcome that is fit for purpose and is a valuable community asset. This requires community to have input.

We provide avenues for this to occur from inception through design and construction, such as open forums, communication with our office, the Your Say page and direct contact with myself.

I'm always happy to receive direct contact and constructive input from community members regarding the projects I am involved with.

Which project have you most enjoyed working with the public on?

I have only worked for council for three years, however, the Lucknow Football and Netball Clubrooms was very rewarding and is a great example of a team effort that combined the club, local designers, builder, subcontractors to provide a long-lasting asset with significant benefits to a broad spectrum of the community.

How have recent events - drought, fire, flood, pandemic - impacted your role?

It's been a bit of a challenge to

say the least! We've seen the area go from dustbowl, to charcoal, to locked down then submerged.

The biggest impact has been seeing the community suffer, look to recover, and be hit again.

The project group has been inundated with recovery funding, but we've suffered shortages of consultants, contractors and materials, coupled with significantly increased costs.

Where's your favourite weekend escape in East Gippsland?

That's an unfair question, there are plenty to choose from ... I love Mallacoota, Cape Conran and the Mitta River or just being on my boat on the Gippsland Lakes.

What's a must-see or must-do in Omeo?

Ride the MTB trail of course ... well not just yet! The old courthouses are being rejuvenated at present. When they are complete later this year a visit is a must. The history is fantastic and the old log jail is a ripper. I can't see anyone breaking out of that one!

Do you get out on the trails yourself as a cyclist, walker or runner?

My knees told me a few years ago that running was off the agenda. I get on the gravel with the mountain bike - mainly bush rides and easier to intermediate trails, either that or bushwalking.

I hiked quite a bit of the Alpine range when I was younger and always enjoy being in the bush.

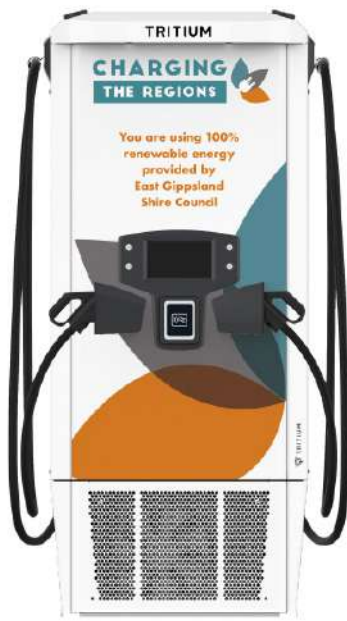
9 July: Marlo Triangle Park Opening, 10.30 am

28 July: Citizenship Ceremony, Lakes Entrance

26 July: Council Meeting, 6.00 pm



Leading the EV charge



You'll soon notice a network of electric vehicle (EV) charging stations for public commuters popping up around the shire.

A total of seven 50kW DC fast-charging EV stations will be installed in East Gippsland's car parks over the next 12 months, with the first four to materialise in coming weeks at the following sites:

- 121 Nicholson Street carpark, Bairnsdale
- Tongio Road roadside park, Omeo
- Carpark at 5 Wolseley Street, Orbost
- Mick Baum Park carpark on Ward Street, Cann River.

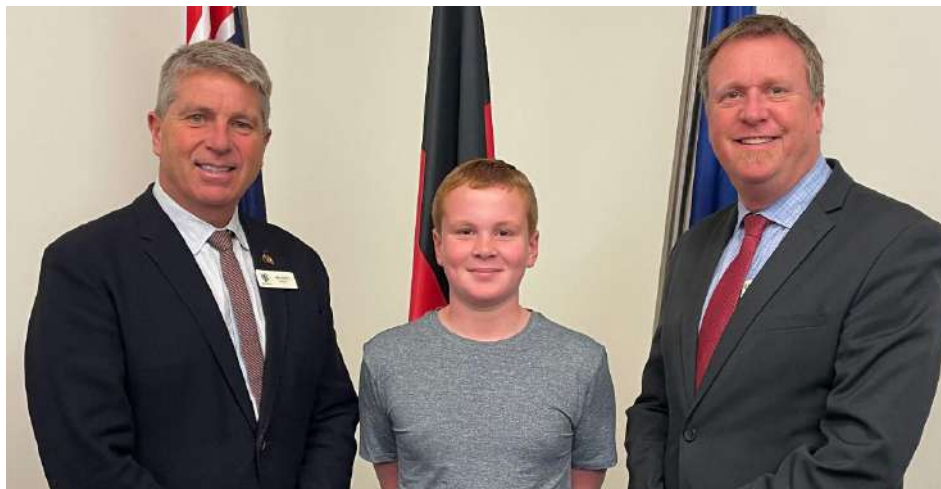
This is all thanks to stage one of the project, funded through the

Australian Government's Local Roads and Community Infrastructure (LRCI) Program.

Stage two, funded jointly by us and a Victorian Government Destination Charging Across Victoria (DCAV) grant, will see the remaining three fast chargers installed by May 2023 in Mallacoota, Buchan and Lakes Entrance.

The entire rollout will take place between now and June 2023. The aim is to support the uptake of electric vehicles and encourage tourism across our region. All electric vehicle charging stations installed by us will source 100% renewable electricity as part of **VECO**.

Visit the project webpage for more information, which will be added to as the project is rolled out.



Congratulations to Harrison Walker from St Brendan's Primary School who attended the Council meeting earlier this month as part of the Rotary Junior Community Award - a program that began in Bairnsdale and is now active internationally.

Council meeting in brief

At the Council meeting on Tuesday 7 June, Council:

- Acknowledged Master Harrison Walker who was watching the meeting in the public gallery as a requirement of his Rotary Junior Community Awards program.
- Heard from three residents who spoke on the Service Centre and Library Review.
- Approved a variance to the South Bairnsdale Industrial Estate Special Charge Scheme which requires some Estate landholders to contribute a portion of the funding required to facilitate works to upgrade the water supply to the estate.
- Voted in favour of granting permit to carry out a jetty extension at the Barrier Landing Jetty, located within Hopetoun Channel, Gippsland.
- Granted an amended permit for the development of a residential village at 75 Paynesville Road, Paynesville.
- Ended two Section 173 Agreements – at 8B Kingscote Drive, Metung, and 31 May Park Drive, Paynesville – to allow proposed developments to proceed.

Read minutes here>>

or watch on YouTube 

Councillors Trevor Stow and Tom Crook with Patties General Manager Michael Hall taking a tour at Patties Foods in Bairnsdale to see projects that are planned as part of sustainability initiatives.



Services Australia comes to you

This June and July, the Australian Government's Mobile Service Centre is coming to Lakes Entrance, Nowa Nowa, Mallacoota, Orbost, Bruthen, Omeo, Metung and Buchan.

The van is the mobile home of Services Australia – the home of Medicare, Centrelink and more.

Find out about payments and services for rural people, older Australians, students, job seekers, people with disability, carers, farmers and self-employed people. Information about Department of Veterans' Affairs programs is also available.

Dates are as follows:

Bruthen: 30 June

Buchan: 5 July

Omeo: 6-7 July

Metung: 8 July

The van has already visited

Lakes Entrance: 22 June

Nowa Nowa: 23 June

Mallacoota: 24 and 27 June

Orbost: 28-29 June

For addresses and times, see the **Mobile Service Centre timetable.**

INVITATION - Marlo Triangle Park Official Opening

Mayor Cr Mark Reeves and Councillors invite you to join them and senior Council officers for the official opening of the Marlo Triangle Park.

DATE: Saturday 9 July 2022

TIME: 10.30 am

LOCATION: Corner of Argyle Parade, Marlo Road

RSVP: civicevents@egipps.vic.gov.au or by telephone: (03) 5153 9500 by Wednesday 6 July 2022

Dress up as a pirate and join us for:

- A sausage sizzle
- Face painting
- The official opening

The Marlo Triangle Park upgrade has created an engaging playground area suitable for a range of ages that complements the natural characteristics of Marlo. Features include new playground equipment, barbecue and seating facilities, and landscaping that complements the existing native characteristics of Marlo.

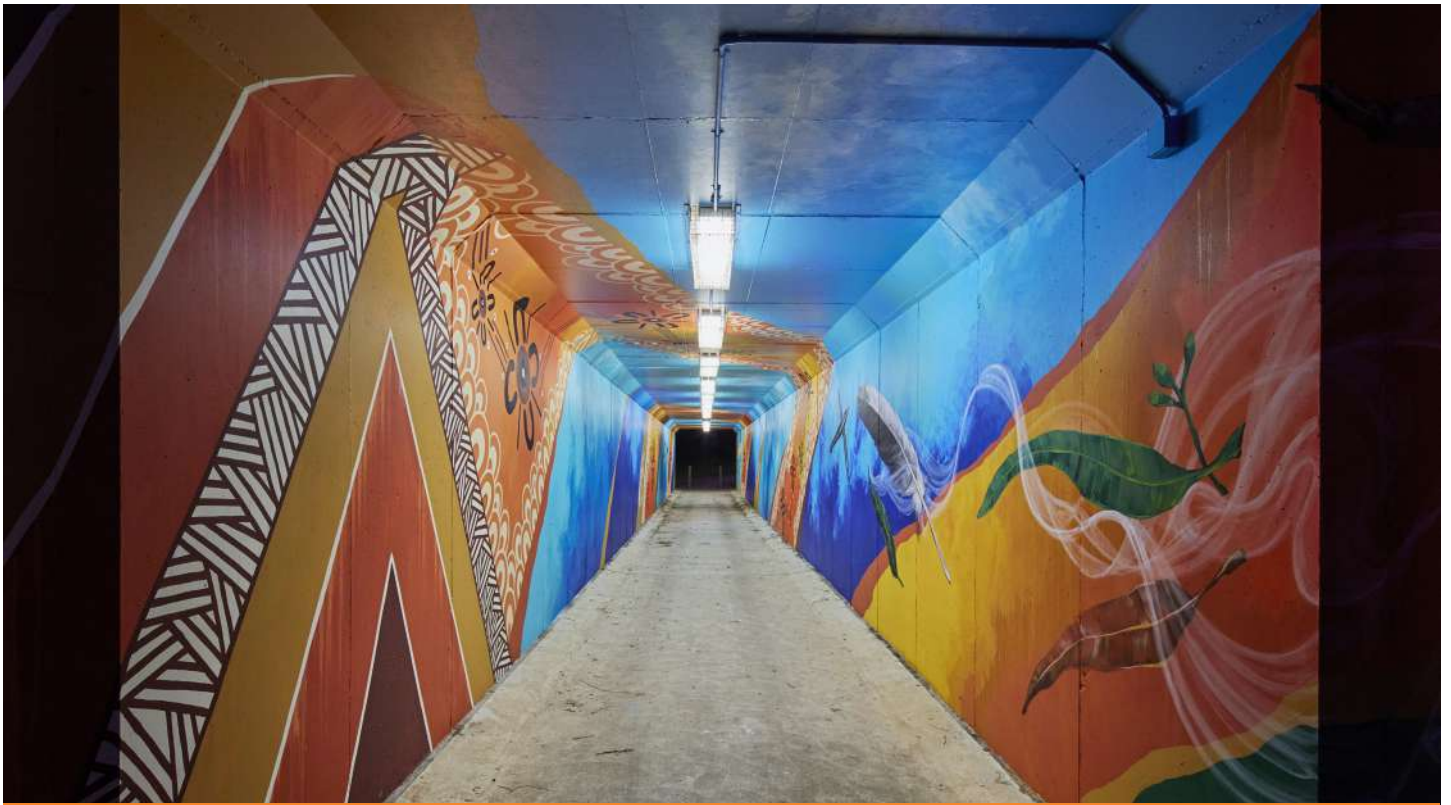
A pedestrian crossing on Marlo Road has also been added to provide a safer connection between the park, primary school and the western residential area.

The project is funded by Council (\$300,000) and a Local Economic Recovery Program grant (\$115,000) - a joint Victorian and Commonwealth governments grant program in response to the 2019-20 bushfires.



Please note, a photographer may be at the event to record the activities for East Gippsland Shire Council. Photographs or videos taken may be used for future publicity and educational materials, including publications and websites. If you do not wish to be photographed, please notify the photographer at the event.





Local indigenous artist Alice Pepper worked with visiting artist David "Meggs" Hooke, on the artwork at the underpass in Nowa Nowa.

Artists brighten rail trail

The East Gippsland Rail Trail has new artwork to boost tourism into the region following the bushfires.

The program supported visitor attractions such as art installations and tourist walks in fire affected regions to assist with recovery efforts and encourage visitors to come back to the regions.

We received \$30,000 from the Australian Government for the project. The project was designed, produced and delivered by The

Social Crew in collaboration with the Gunaikurnai Land and Waters Aboriginal Corporation. Funding was also received from the Victorian Government and the project was supported by the East Gippsland Rail Trail Committee.

Called 'Under the Surface', the series of artworks are dotted along the East Gippsland Rail Trail, from Bairnsdale to Orbost.

Local indigenous artists Alice Pepper and Patricia Pitman were joined by visiting artists David "Meggs" Hooke,

Ling and Minna Leunig in solo and collaborative works led by the story of the Gunaikurnai community.

Sites include:

- Nicholson River Bridge, Nicholson
- Nowa Nowa underpass/tunnel
- Partelli's Crossing, Tostaree
- Orbost Butter Factory

You can check out a video of the project on [**The Social Crew's Facebook page.**](#)



Melbourne street artist Ling painted The Orbost Butter Factory.

It's festival time!

**The
festival
runs until
10 July**

*We are proud to sponsor the
East Gippsland Winter Festival!*

After a long, not-so-hot summer, the East Gippsland Winter Festival is finally here! Officially kicking off last Friday and running until 10 July – there is plenty of entertainment to enjoy from art, lantern parades, exhibitions, food and drinks, workshops or tours – there's something for everyone. For a full list of events and booking details, go to the **East Gippsland Winter Festival website**.

Crowds flocked to see the Fire and Ice performance.



The ice sculptor at Metung bringing the ice alive.



The Lantern Festival and workshops are a must do these school holidays.

Grants open

We're calling for applications for our Community Grants Program.

Grants of up to \$5,000 are available in both the Community Projects, and Arts and Heritage streams. Up to \$10,000 is available for Major Arts Projects grants. The program requires a dollar-for-dollar contribution by the applicant, half of which can be a non-monetary, in-kind contribution.

Our grant staff will be holding online grant information sessions on Wednesday July 6 and 13.

To find out more about the information sessions, the grant guidelines and how to apply, visit the **Grants page on our website**.

Applications close on Wednesday 3 August at 5.00 pm.

**Join an
information
session on 6 or
13 July**



CBCA BOOK WEEK 2022
20-26 August

Dreaming with eyes open...



#CBCA2022

ARTWORK BY JASMINE SEYMOUR | © THE CHILDREN'S BOOK COUNCIL OF AUSTRALIA

2022 CBCA BOOK WEEK

20-26 AUGUST

To celebrate CBCA Book Week 2022, you are invited to enter our annual

DRAW A PICTURE/WRITE A STORY COMPETITION

For more information visit your local library or phone 5152 4225.

Your small acts make a big impact

Reducing waste and recycling correctly to be made easier for Victorians.

Sustainability Victoria on behalf of the Victorian Government has launched a new campaign, Small Acts Make a Big Impact, making it easier for Victorians to find ways to reduce waste and recycle correctly. Small Acts Make a Big Impact highlights eleven small actions Victorians can do to reduce their waste and recycle well that collectively will have a big impact on the environment and Victoria's sustainable future. By jumping online and answering a short set of questions on the Sustainability Victoria website, Victorians can find a small act that works for them to take action today.

In 2021, 21 per cent of the recyclable materials collected from Victorian household recycling bins had to be sent to landfill, partly due to high levels of contamination. By checking council information to make sure waste and recycling is

sorted correctly, Victorians can help reduce this amount and ensure more valuable resources can be made into new things.

With single-use plastics making up a third of the litter we see in Victoria's streets, parks and waterways, where they cause harm to wildlife and our health, if Victorians took the small action of remembering their reusable bags, we could help reduce the number of plastic bags piling up in landfill and littering our environment. By making small changes to how you manage waste and recycling, such as planning weekday dinners, remembering your reusable water bottle when you leave home, or taking used batteries to a recycling drop-off point, you can help have a big impact on East Gippsland's sustainable future.

Find out about the simple things you can do to reduce waste and recycle more and choose your small act today at the **Sustainability Victoria website.**



Sustainability
Victoria



Lindenow lights



Lindenow Football Netball Club is celebrating a big win, with Council awarded a \$191,000 Sport and Recreation Victoria grant to upgrade the lighting at Lindenow Sports Ground to brighter and more efficient LEDs. The new LED lighting will replace the existing halogen lights, which do not meet current guidelines, supporting football games and school athletics after dark and will support the development of female football in the region.

The funding has come from the 2021-22 Country Football and Netball Program, which is a partnership with Netball Victoria, the Australian Football League and AFL Victoria.

The lighting will benefit all clubs and community who use the reserve, making it easier for players of all abilities and supporters to get involved in local sport, as well as improving the reserve's energy efficiency.

Compost rebates available now

It's not too late to grab a financial rebate this financial year when purchasing a product from the extensive range available through Compost Community.

Keeping food waste out of your rubbish bins helps reduce your carbon footprint and stops waste going to landfill.

The \$40 rebate is available to East Gippsland residents for:

- compost bins
- worm farms
- pet poo bins
- and more

View the [compost community website](#) to see the available products. Happy composting!



Gymnastics club getting a new facility!



Community-based East Gippsland Gymnastics Club offers classes for everyone, from toddlers to mature-age adults, and we're excited to have secured \$1.89 million in funding to create a new gym space for the club and community.

Work on the project has already begun.

This future home for the local gymnastics community will feature two Olympic-standard in-ground trampolines and an open-ended trampoline that will flow into a six-square-metre soft landing area.

A "ninja zone" will include a scaffolding rig and other challenging obstacles.

A mezzanine viewing area with seating and heating will complement the facility.

Site construction activities commenced 9 May and is progressing well. It is expected that the works will take approximately 10 months to complete.

To check out this project, one of 10 new projects to have recently been listed, **visit Your Say.**



Help shape the future of visitor services



Be part of reshaping the future of visitor services in East Gippsland

Our Economic Development team is commencing its community consultation of the Visitor Information service review with a Community Survey.

The survey can be accessed via Your Say, Visitor Information Centres, service centres and libraries and can be submitted

through Your Say, in person at one of our centres, by email at feedback@egipps.vic.gov.au or by post to PO Box 1618, Bairnsdale VIC, 3875.

As a thank you, completed surveys can go into a draw to win one night for two guests at a lagoon-side glamping tent at the new Metung Hot Springs.

The survey closes Tuesday 19 July.

Take the survey.



Helping communities recover

A series of Council-sponsored events will be rolling out in Clifton Creek over the next few months, celebrating community connections and contributions. The events, sponsored by East Gippsland and Wellington Shire Councils and Connect Well, will kick off in July with a Youth Winter Ball, and culminate with The Big Bash @ Clifton Creek in October. **Check out the Clifton Creek Community Facebook page for details.**

Tennis anyone?

Genoa is celebrating the opening of new tennis courts. And is there a more beautiful setting for a game? The \$370,000 project saw Council replace the old courts with a synthetic surface.

One court has been overlaid with netball lines and a basketball key to create even more sporting opportunities.

The courts were funded via:

- a \$185,000 state and federal government Local Economic Recovery Program grant;
- a \$160,000 grant from the federal government's Local Roads and Community Infrastructure Program, and
- \$25,000 from us.

The courts are already being used, with an opening event on Sunday June 19 hosted by the dedicated volunteers of the Genoa Sports Club attracting 60 people.

Photograph: Geoff Stanton Photography



Council in the community

A wintry blast wasn't enough to keep our Councillors and community members from getting together in the Orbost region on the last day of May.

Councillors met with a number of key groups in Nowa Nowa and Orbost to chat about town-specific topics

and other key projects and priorities for the region. The crew also met with members from Moogji Aboriginal Council East Gippsland Inc. and held a joint meeting with the Orbost District Community Recovery and Transition Committee and the Future of Orbost project.

Better boating at Shaving Point

Not a great day for boating, but a great day for funding announcements!

More than half a million dollars was recently pledged for the Metung Shaving Point boat ramp redevelopment, which will include the replacement of the concrete dual-lane ramp, jetties, and floating pontoons to be replaced and reducing the sand build-up. Minister for Fishing and Boating Melissa Horne was in town to make the announcement on the first day of winter, with Better Boating Victoria also announcing funding for an all-abilities access extension to the main boat launching area along Marine Parade in Lakes Entrance.



Mayor Cr Mark Reeves and Wayne Richards, Manager Community Facilities and Open Space were delighted to welcome Minister for Fishing and Boating, Melissa Horne to announce funding to redevelop Metung's Shaving Point boat ramp.

Making a statement

Noticed anything different at the Bairnsdale landfill lately? Some old compactor parts destined for the recycling plant have been recycled in a different way. Upcycled if you will! Don't they look great as an entry statement to the site?



Outreach days a success

Thanks to all the farmers who made the Community Outreach days in May a great success. A chance for the region's drought-affected farmers to connect with all levels of government, including our own staff, the events brought together charities, health services, not-for-profit and agricultural organisations to support farmers and rural and regional communities living through the immediate and longer-term effects of drought and multiple severe weather events.

The four events held in Marlo, Cann River, Bengworden and Bonang attracted more than one hundred farmers in total, who were able to access support they weren't aware was available to them and interact with other likeminded locals looking for a listening ear.

Did you know?

Our Environmental Health team works with your fave takeaway outlets, restaurants, cafes, and food manufacturers to make sure they follow safe food practices.

We complete more than the required number of food safety assessments, because we also check businesses when ownership changes (104% of assessments compared to 71% in similar sized councils).

Read more of our food safety stats.



Roadmap for waste management



The recently adopted **East Gippsland Waste Management Action Plan 2022-2032** provides a roadmap to:

- achieving a preserved and enhanced natural environment
- sending less waste to landfill
- adopting environmentally sustainable practices
- developing a circular economy by creating new markets for recycled, repurposed and reused products.

Council officers, in particular the Sustainability and Waste Minimisation team, can use the plan as a tool when making day-to-day decisions across its operations

and projects to ensure that they meet Council's strategic objectives (including the objectives of the Council Plan 2021-2025).

The Action Plan also puts the East Gippsland Environmental Sustainability Strategy 2022 – 2032 into practice.

The Action Plan has a 10-year focus, but will be subject to an annual review and reviewed comprehensively every four years to ensure ongoing alignment with the Council Plan. The plan will guide projects such as food waste collection, separated glass disposal infrastructure and a third-party review of the waste services offered by Council.

Everyone can make a difference in their community by reporting incidents and issues quickly and easily with Snap Send Solve.

Just download the **Snap Send Solve app** on your smart phone, take a pic of the problem and post it directly to us.

If the issue is an emergency requiring immediate action (a tree across a road, wandering animals, etc) it's still best to give us a call.



Our Gender Equality Action Plan

One in four Australian women has experienced physical or sexual violence from a partner, with 2.2 million women (23%) aged 18 years and over having experienced sexual violence.

Gender equality is one of the primary drivers in the prevention of violence against women so, importantly, our recently adopted Gender Equality Action Plan articulates the agreed strategies that we will undertake to improve workplace gender equality in our organisation.

We completed a Workplace Gender Audit in 2021 to get a baseline understanding of gender equality within the workplace. The results were used to develop the plan.

The plan considers and addresses the outcomes of our Workforce Gender Audit and articulates

the agreed strategies that we will undertake to improve workplace gender equality.

While the plan was developed to meet legislative requirements under the Gender Equality Act 2020 (which requires Victorian public sector agencies including councils to measure, report on, plan for and progress gender equality) it also highlights our vision as an organisation and representative employer and makes plain our need and responsibility to lead and support change within both our organisation and the wider community.



MAJOR PROJECTS UPDATE

Lake Tyers Beach Hall set for upgrade

Work to upgrade the much-loved Lake Tyers Beach Community Hall, which dates back to 1962, will begin this year with the construction contract expected to be awarded in September.

The hall, opposite Lake Tyers Beach Recreation Reserve on Mill Point Road, Toorloo Arm, will be unavailable for bookings from the end of July until early 2023.

The upgrade of the hall will include:

- Improved IT facilities
- Upgraded meeting spaces allowing for more flexible use of available space
- Improved bathroom facilities (including an increased number of toilets)
- Landscaping
- A purpose-built outdoor stage for events.

The hall is owned by Council and run by a small committee of dedicated volunteers. The upgrade is funded by a \$400,000 Federal Government Black Summer Bushfire Recovery grant.

The major upgrade follows a kitchen renovation, funded by a \$5,000 grant in 2019/20.

For more information and to receive updates on this project, head to **Your Say**.



New path improves safety

Improved safety is a great outcome of the new footpath along Mirrabooka Road, from Lakeside Drive intersection to the corner near Raheen Drive - now connecting Mallacoota.

Completion of the \$582,000 project involves a pedestrian island allowing people to cross one lane of Lakeside Drive and wait before crossing the other lane. Also, we have improved

the drainage infrastructure at the intersection of Mirrabooka Road and Lakeside Drive.

We're really pleased that this new footpath has been completed in time for community members to enjoy before the warmer months.

To finalise the project, we are installing a guardrail along an 80m section of the road shoulder to further improve road safety in the area.

Heart of Island gets a boost



Raymond Island Community Hall is getting a much-needed upgrade and extension.

Once completed, it will be larger, accessible to all, more functional and a vital resource for bushfire evacuation and recovery.

The extension will provide increased opportunities for locals to hold activities and events, which will bring people together and make sure it serves as the heart of the tight-knit community.

The hall, on Sixth Avenue, is integral to the community and its safety, so it will also be made more resilient to ember attack, making it safer in the face of bushfires and more

suited as a point of refuge in times of emergency. In addition to design changes, a 10,000-litre water tank will also be installed for firefighting purposes.

Planning and design is complete, so we're moving towards taking on contractors and starting construction, which is set for October. We're sure it will lift the spirits and strengthen the resilience of the community.

The total cost of the works is \$158,000, with \$146,800 coming from the Australian Government's Black Summer Grants Program and \$12,000 from Council.

To receive project updates, visit **Your Say**.

BUSHFIRE RECOVERY

A new community hall for Club Terrace

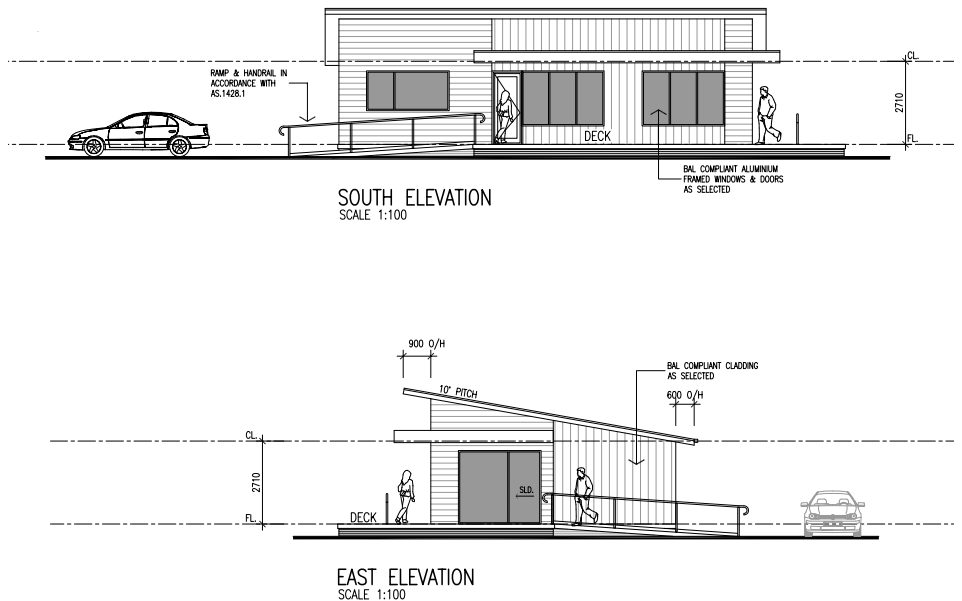
Club Terrace, 19km from Cann River, was hit by the Black Summer Bushfires and its community hall was badly damaged.

Now, a Bushfire Recovery Victoria grant of \$751,000 has allowed us to begin construction of a new purpose-built facility.

The new accessible 220m² hall on School Road will feature an office space and two multipurpose rooms and will serve as a hub for community events, celebrations and gatherings in times of need.

We're sure it will be a welcome addition to the Club Terrace community when it opens in the winter of 2023.

Councillors visited on Monday 16 May to hold discussions with the Club Terrace Committee of Management and residents about the new community facility, the upgrading of a shed to be used



as a meeting place following the demolition of the old school and bushfire-recovery and related issues.

We're sure the new hall will be

a welcome addition to the Club Terrace community when it opens in the winter of 2023.

For more information, visit the **Your Say website.**

Bushfire support continues

We are continuing to support people whose homes were destroyed or damaged by the fires of 2019-20.

Our Rebuild Support Service, set up in partnership with Bushfire Recovery Victoria, provide specialised advice to help streamline both planning permit application requirements and advice.

Some of the support available through the service is:

- help with planning and rebuilding – including preparation and submission of a planning permit application
- connecting residents to organisations and services that offer specialised services such as health and wellbeing case support and financial counselling;

- copy of Title, Property Report, Preliminary Property Assessment, BAL Assessment for your property.
- The Rebuild Support Service has already helped many people begin their rebuilding journey. Figures indicate that across the shire there have been:
- 214 referrals to Rebuild Support Service
- 15 applications are in preparation
- 14 customers do not require a permit
- 173 planning applications lodged
- 158 planning permits approved

If you need assistance navigating planning approvals, contact the service on brss@egipps.vic.gov.au.

More than two years since the fires, rebuilding remains slow. There are a range of reasons and challenges being faced by those rebuilding. Some reasons include insurance that does not cover the increased building costs or the current bushfire building standards, limited numbers of builders/ tradespeople, increase in building costs over the last year, and supply chain issues reducing building material availability.

This situation presents complex issues which require more effort and attention from all levels of government and other partners. We are advocating strongly on relation to these issues with the state and federal governments. We are also convening with partners to work on finding solutions to these barriers.

HELP LOCAL ENTREPRENEURS THRIVE!



BUSINESS BOOST: CULTIVATING AND CONNECTING ENTREPRENEURS

Contact: Anne Kaiser at
annek@egipps.vic.gov.au
or 0488 700 034

Do you have a knack for seeing opportunities?

Do you want to help improve our local economy?

Are you skilled in marketing, finance, IT, business compliance or similar?

Our “Business Boost” program invites you to be part of its ‘Resource Team’ of talented locals who provide volunteer professional support to our future business leaders and entrepreneurs.

If you want to be part of new entrepreneurial ventures, contribute to our community, while networking and sharing your expertise, [join our information session](#) or scan the code.



What's on calendar

We are proud to support many major arts, sporting, cultural and community events each year. Here are some events hitting our region over the next couple of months.



East Gippsland Winter Festival

Embrace the chill of the season with an abundant celebration of art, wine, local produce and live music. From Metung on the Gippsland Lakes to Omeo in the High Country and all the way to Mallacoota in the far east. The inaugural festival program is jam-packed full of workshops and beautiful art installations for you to experience and explore during the East Gippsland Winter Festival. 17 June – 10 July

Various locations

[More information>>>](#)



Deep in the Weeds

Deep in the Weeds is a celebration of the deep dark winter in the deep dark southeast. Part of the East Gippsland Winter Festival, Deep in the Weeds is the event for audiences seeking to immerse themselves in the arts, food and wine, culture, nature and well-being. Brought to you by Sailors Grave, renowned for hand-crafted artisanal beers made in the heart of Orbost on the banks of the Snowy River.

8-10 July

5 pm

Old Butter Factory, 7 Forest Road, Orbost

[More information>>>](#)



Singing workshop with Kutcha Edwards

Kutcha Edwards, proud Mutti Mutti, Yorta Yorta and Nari Nari man shares his songs and stories inspired by the history and struggle of his people. From the first song Kutcha ever wrote to a song written in his fathers' language, Kutcha's Songline has been inspired and influenced by the people and places he has travelled. From campfires to world stages, prisons to universities, Kutcha encourages the power of song to heal the spirit.

1 July

4 pm

Mallacoota Mudbrick Pavilion

=====

2 July

4 pm

Lakes Entrance Mechanics Hall

[More information>>>](#)



SuperTrail East Gippsland

SuperTrail East Gippsland is part of the SuperTrail running events across Australia. The running event is held over the weekend and features a 2km track for the family to the challenging 55km trail. With the largest prize purse in Australian trail running events on offer, place getters for the triple crown will go home with cash prizes.

5-7 August

Lakes Entrance and Nowa Nowa

[More information>>>](#)



Circling time – Songs and stories by Kutcha Edwards

From the wings of a darkened stage drifts the evocative, slightly haunting sound of clap sticks. A stoically paced figure slowly emerges singing in his traditional language. This mesmerising introduction heralds a performance by renowned Aboriginal singer/songwriter and proud Mutti Mutti, Yorta Yorta and Nari Nari man, Kutcha Edwards.

1 July

7.30 pm

Mallacoota Mudbrick Pavilion

[More information>>>](#)

2 July

7.30 pm

Lakes Entrance Mechanics Hall

[More information>>>](#)



What's On at Forge Theatre and Arts Hub

The Forge Theatre and Arts Hub offers a range of shows to suit everyone. Some of our upcoming shows include:



2022 Melbourne International Comedy Festival Roadshow

Saturday 2 July, 7.30 pm

Strap yourself in Australia! The Melbourne International Comedy Festival Roadshow is hitting the highways to home-deliver the freshest and funniest from the 2022 Festival to neighbourhoods across the nation. hits from many great composing duos.



Singing Workshop with Kutch Edwards

Sunday 3 July, 4.00 pm

Kutch Edwards, proud Mutti Mutti, Yorta Yorta and Nari Nari man shares his songs and stories inspired by the history and struggle of his people. From the first song Kutch ever wrote to a song written in his fathers' language, Kutch's Songline has been inspired and influenced by the people and places he has travelled.



Circling time – songs and stories by Kutcha Edwards

Sunday 3 July, 7.30 pm

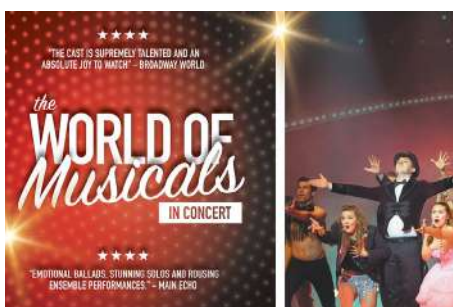
From the wings of a darkened stage drifts the evocative, slightly haunting sound of clap sticks. A stoically paced figure slowly emerges singing in his traditional language. This mesmerising introduction heralds a performance by renowned Aboriginal singer/songwriter and proud Mutti Mutti, Yorta Yorta and Nari Nari man, Kutcha Edwards.



No quarter - The Ultimate Led Zeppelin Legacy

Sunday 10 July, 7.30 pm

No quarter - The Ultimate Led Zeppelin Legacy has been wowing audiences all over the world in their authentic tribute stage show for more than 15 years and has shared the stage with such legendary artists as Peter Dinklage, Foreigner, Steppenwolf, Loverboy, Jefferson Starship and many others.



The World of Musicals

Wednesday 13 July, 7.30 pm

The World of Musicals Concert has graced stages across the globe and features a world-class ensemble of multi-talented performing artists who exquisitely recreate classic hits, fused with emotive ballads, big-screen anthems and iconic show tunes.



Gilbert, Sullivan and the Great Composers

Saturday 16 July, 2.00 pm

In this production Gilbert, Sullivan and the Great Composers, Promac not only perform a selection of hits and highlights of the most popular musicals but have added other great hits from many great composing duos including Lerner & Lowe, Rodgers & Hart, Webber & Rice and The Gershwin Brothers to name but a few.

For the most up-to-date information on shows or to book tickets, visit the Forge Theatre page on our website.



Our Councillors



Cr Mark Reeves – Mayor

Direct - 0419 016 581

cr.reeves@egipps.vic.gov.au



Cr Arthur Allen - Deputy Mayor

Direct - 0429 630 474

cr.allen@egipps.vic.gov.au



Cr Trevor Stow

Direct - 0439 285 111

cr.stow@egipps.vic.gov.au



Cr Sonia Buckley

Direct - 0429 567 229

cr.sbuckley@egipps.vic.gov.au



Cr Mendy Urie

Direct - 0436 324 179

cr.urie@egipps.vic.gov.au



Cr Tom Crook

Direct - 0429 554 064

cr.crook@egipps.vic.gov.au



Cr Kirsten Van Diggele

Direct - 0429 629 950

cr.vandiggele@egipps.vic.gov.au



Cr Jane Greacen OAM

Direct - 0428 478 219

cr.greacen@egipps.vic.gov.au



Cr John White

Direct - 0498 001 531

cr.white@egipps.vic.gov.au

Note: When emailing a Councillor, type "Att Cr (their last name)" in the subject line.

*Scan here to subscribe
to this monthly
community newsletter*

